

EMERALD

KATONG

EMERALD

KATONG



Rationale of name:

Emeralds are precious gemstones celebrated for their vibrant green hue, often symbolizing nature, vitality, and growth. This calming green also promotes harmony and balance. The 6 residential blocks comprising **846 units of 1+ Study to spacious 5 bedroom**, are nestled amidst beautifully landscaped gardens on the landscape deck and beside the future neighborhood park, offering a serene and picturesque environment.

Rising above the prime **District 15**, **Emerald of Katong** emerge like polished emeralds in the heart of Katong, embodying modern and elevated living. The location of the development along **Jalan Tembusu** is invaluable, offering excellent connectivity, a vibrant lifestyle, proximity to renowned schools, and array of dining options.

Emerald of Katong symbolizes a home filled with life's true treasures, where cherished moments and memories are made with all that we hold dear, your foundation of warmth and vibrancy.

**Amenities within
500m radius of
Emerald of Katong**



Enjoy a network of connectivity at your doorstep:

3 mins walk – Cafes & eateries along Tanjong Katong Road



5 mins walk – Tanjong Katong MRT (TE25)

TEL Thomson-East Coast Line

5 mins cycle – East Coast Park

6 mins cycle – i12 Katong

Within 1 km to the project – Tanjong Katong Primary School, Haig Girls' School

2 mins drive – East Coast Parkway (ECP)

7 mins drive – PLQ Mall, Paya Lebar MRT (EW8/CC9)

11 mins by train – Marina Bay MRT (NS27/CE2/TE20)

13 mins by train – Central Business District

1 MRT stop – Parkway Parade

Note: All travel times are estimates and subject to actual traffic conditions.

[嘉乐轩] EMERALD OF KATONG - FACT SHEET

Developer / Licence No.: C1485	Sim Lian JV (Katong) Pte. Ltd. (Co. Reg. No. 202332145G) (Jointly developed by Sim Lian Group Ltd & Sim Lian Development Pte Ltd)
Site Area Permissible GFA	20,572.10 sqm (221,436 sqft) GFA: 72,003 sqm (775,034 sq ft)
Tenure Of Land	99 years Leasehold w.e.f. 07 Nov 2023
Description	Proposed condominium housing development comprising 6 blocks of 18 / 19 / 21-storey apartments (Total 846 units) with landscape deck, basement carpark , communal facilities and swimming pool on Lots 07845A MK 25 at Jalan Tembusu. (Full condo facilities)
Unit Type	1+Study to 5 Bedroom (484 sqft to 1,561 sqft)

PROJECT CONSULTANTS

Architect	M.A.N Architects LLP	Structural Engineer	KCL Consultants Pte Ltd
Landscape Architect	Tinderbox Landscape Studio Pte Ltd	Mechanical Engineer	United Project Consultants Pte Ltd
Main Contractor	S&L City Builders Pte Ltd	Electrical Engineer	

Unit Mix	Sq m (Excludes AC ledge)	Sq ft (Excludes AC Ledge)	Total Units	
1 + Study	45	484		
2 Bedroom Premium	58 / 60	624 / 646		
2 Bedroom + Study	63 / 64 / 65	678 / 689 / 700		
3 Bedroom Classic	82 / 84	883 / 904		
3-Bedroom + Study	90 / 92 / 95	969 / 990 / 1,023	846 units	
3-Bedroom Flexi	92	990		
4-Bedroom + Study	107	1,152		
4-Bedroom Premium	117 / 118	1,259 / 1,270		
4-Bedroom Luxe+Study	121 / 122	1,302 / 1,313		
5 Bedroom Premium	137 / 138 / 145	1,475 / 1,485 / 1,561		

Note: Unit sizes subject to final survey.

Disclaimer: Information is accurate as of 04 Oct 2024 & is subjected to change without prior notice. Full disclaimer as stated on the last page.

About The Developer

SIM LIAN LAND

Sim Lian Land, a subsidiary of Sim Lian Group Limited, has a remarkable track record of more than 40 years. The Group enjoyed a reputable standing as an established developer of residential developments and construction group with an extensive portfolio of development built on the core foundations of prime location, quality workmanship and efficient space planning. The Group's impressive list of property development projects include The Lincoln Residences, Rochelle at Newton, Viz at Holland, Hillion Residences, Clover by the Park, The Pearl at Mount Faber, A Treasure Trove and Waterview.

Exquisite craftsmanship and finishing, dedicated attention to intricate details and carefully thought through designs are the criteria the Group adhere to in delivering quality homes. These are the distinctive hallmarks that are reflected in the Sim Lian brand, having ranked amongst the Top 10 Developer in Singapore by BCI Asia in 2015 and 2016.

SIM LIAN DEVELOPMENT

Sim Lian Development Pte Ltd is a subsidiary of Sim Lian Holdings Pte Ltd (SLH). Incorporated in 1996, Sim Lian Holdings' developments include commercial office buildings, retail malls, business spaces and private residential developments. It has presence in Singapore and Australia and is looking to diversify into other markets and asset classes.

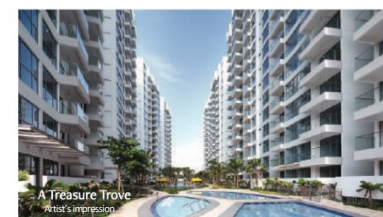
Some iconic projects developed by Sim Lian Holdings include Vision Exchange in Jurong Lake District, Hillion Mall and Hillion Residences in Bukit Panjang. Other investment assets include office towers in Brisbane and Melbourne.

Jointly Developed By

SIM LIAN LAND PTE LTD | SIM LIAN DEVELOPMENT PTE LTD



EMERALD
KATONG



DEVELOPER
Sim Lian JV (Katong) Pte Ltd

DEVELOPER'S LICENCE NO.
C1485

LOT NO. / MUKIM
07845A / MK 25 at Jalan Tembusu (Marine Parade Planning Area)

TENURE OF LAND
99 years leasehold

EXPECTED DATE OF NOTICE OF VACANT POSSESSION
TBA

EXPECTED DATE OF LEGAL COMPLETION
TBA

1 Bedroom + Study

TYPE A1S

45 sqm / 484 sqft

Inclusive of 5 sqm Balcony

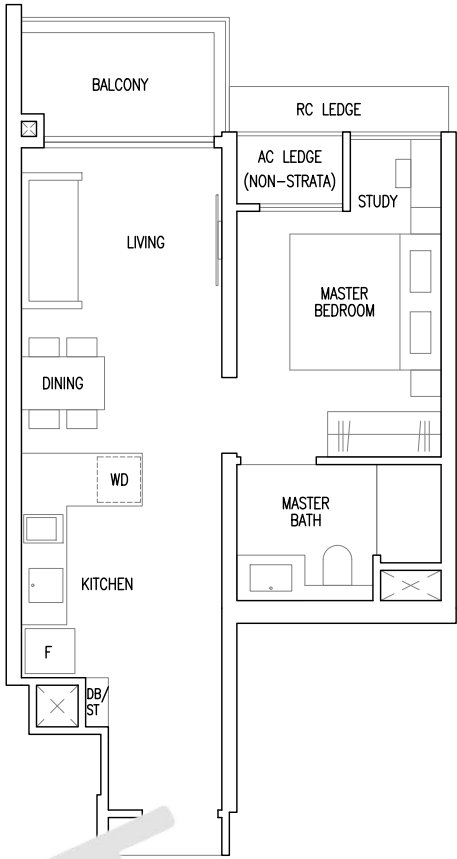
Blk 55 #02-22 to #21-22

Blk 57 #02-30 to #21-30

MIRROR UNIT

Blk 51 #02-01 to #21-01

Blk 63 #03-35 to #21-35

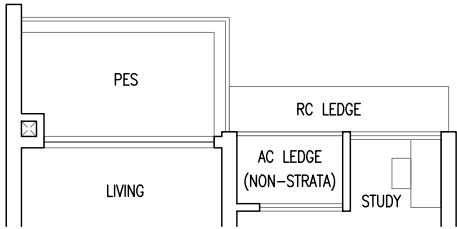
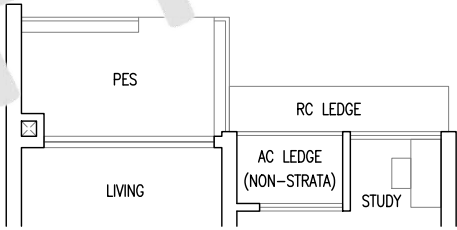


TYPE A1S(p)

45 sqm / 484 sqft

Inclusive of 5 sqm PES

Blk 57 #01-30

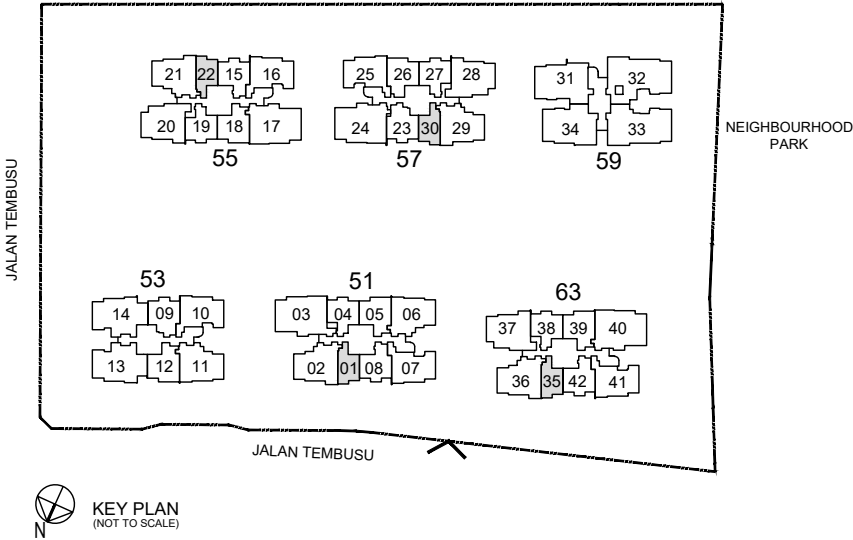


Blk 55 #01-22

MIRROR UNIT

Blk 51 #01-01

- F : Fridge
- WD : Washer Cum Dryer
- DB/ST : Distribution Board / Storage
- RC Ledge : Reinforced Concrete Ledge (Non-Strata)
- AC Ledge : Air-Conditioner Ledge (Non-Strata)



Area includes balcony and Private Enclosed Space (PES) where applicable. All RC Ledges and AC Ledges are excluded from strata area and are non-load bearing. Some units are mirror images of the floor plans shown in the brochure. Orientations and facings will differ depending on the unit you are purchasing, please refer to the key plan. The above plans and illustrations are subject to changes as may be required or approved by the relevant authorities and do not form part of any offer or contract. Areas are estimates only and are subject to final survey. The balcony & PES shall not be enclosed unless with the approved balcony screen. For an illustration of the approved balcony screen, please refer to Annex A of this brochure.

2 Bedroom Premium

TYPE B1P

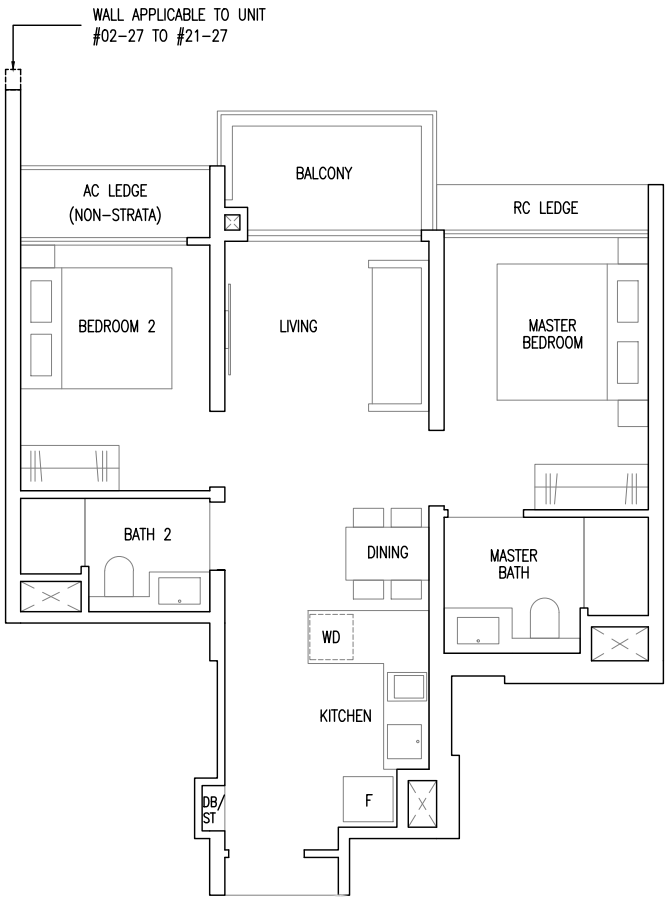
58 sqm / 624 sqft

Inclusive of 5 sqm Balcony

Blk 51 #02-04 to #21-04
Blk 63 #03-38 to #21-38

MIRROR UNIT

Blk 55 #02-19 to #21-19
Blk 57 #02-27 to #21-27



TYPE B1P(p)

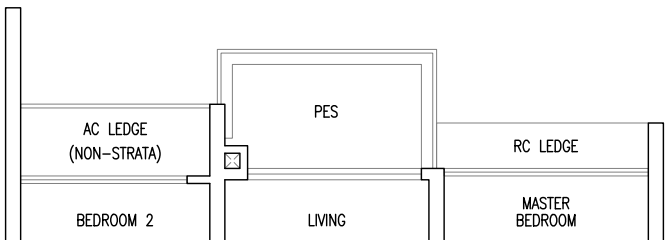
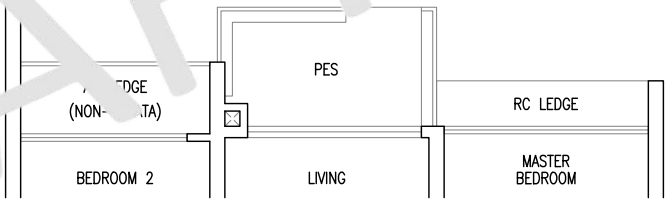
58 sqm / 624 sqft

Inclusive of 5 sqm PES

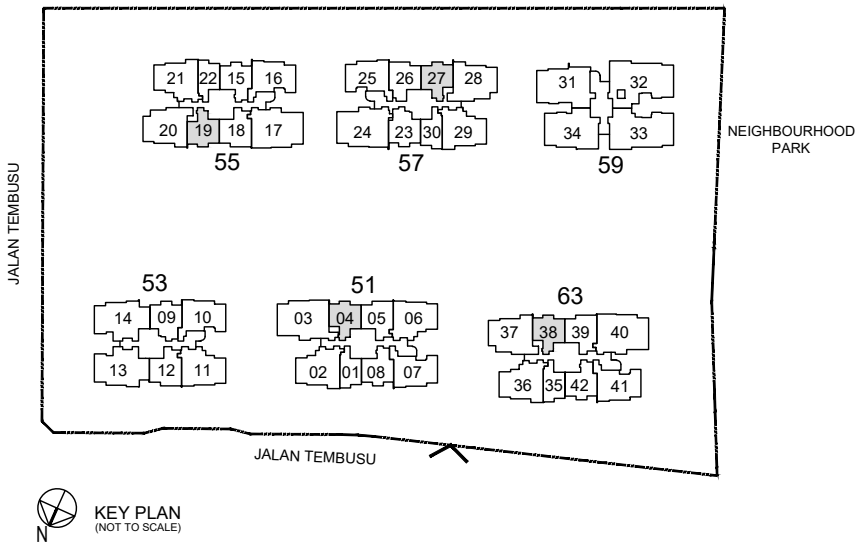
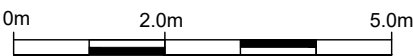
Blk 51 #01-04

MIRROR UNIT

Blk 55 #01-19



F : Fridge
WD : Washer Cum Dryer
DB/ST : Distribution Board / Storage
RC Ledge : Reinforced Concrete Ledge (Non-Strata)
AC Ledge : Air-Conditioner Ledge (Non-Strata)



Area includes balcony and Private Enclosed Space (PES) where applicable. All RC Ledges and AC Ledges are excluded from strata area and are non-load bearing. Some units are mirror images of the floor plans shown in the brochure. Orientations and facings will differ depending on the unit you are purchasing, please refer to the key plan. The above plans and illustrations are subject to changes as may be required or approved by the relevant authorities and do not form part of any offer or contract. Areas are estimates only and are subject to final survey. The balcony & PES shall not be enclosed unless with the approved balcony screen. For an illustration of the approved balcony screen, please refer to Annex A of this brochure.

2 Bedroom Premium

TYPE B2P

60 sqm / 646 sqft

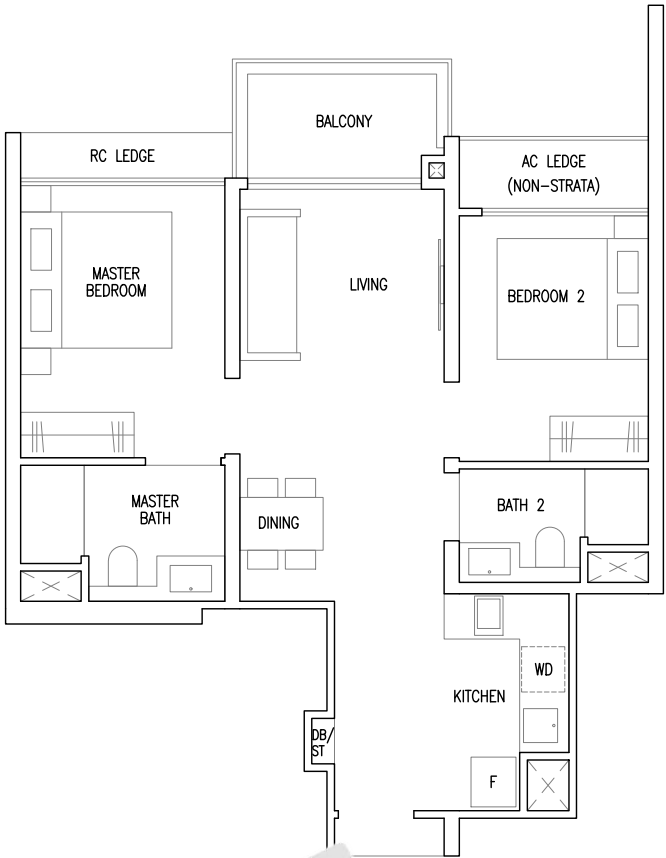
Inclusive of 5 sqm Balcony

Blk 55#02-15 to #21-15

MIRROR UNIT

Blk 51#02-08 to #21-08

Blk 63#02-42 to #21-42



TYPE B2P(p)

60 sqm / 646 sqft

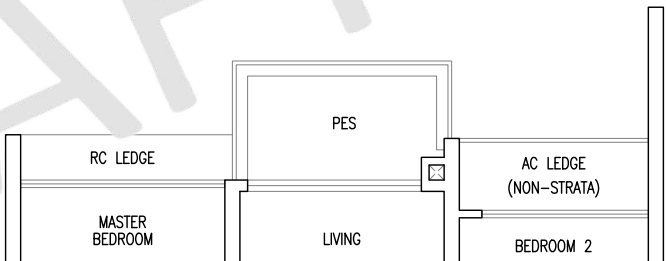
Inclusive of 5 sqm PES

Blk 55#01-15

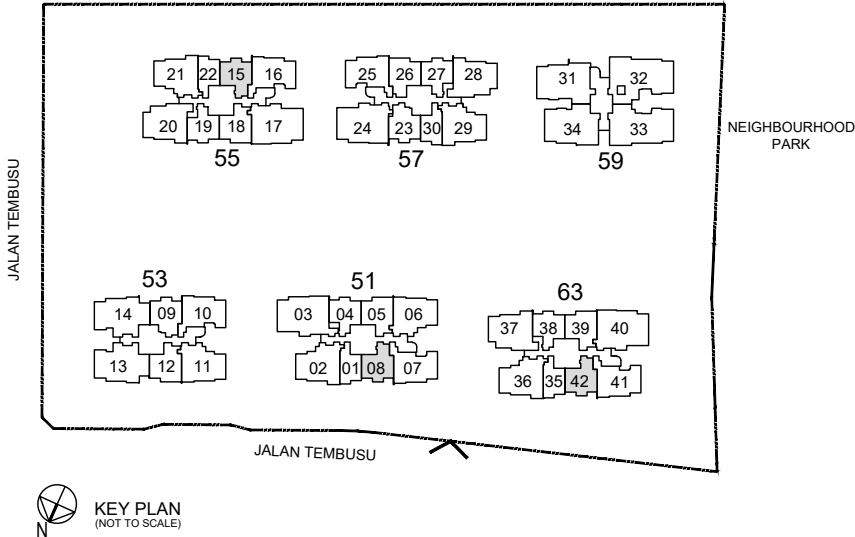
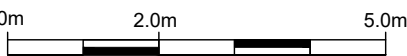
MIRROR UNIT

Blk 51#01-08

Blk 63#01-42



- F : Fridge
- WD : Washer Cum Dryer
- DB/ST : Distribution Board / Storage
- RC Ledge : Reinforced Concrete Ledge (Non-Strata)
- AC Ledge : Air-Conditioner Ledge (Non-Strata)



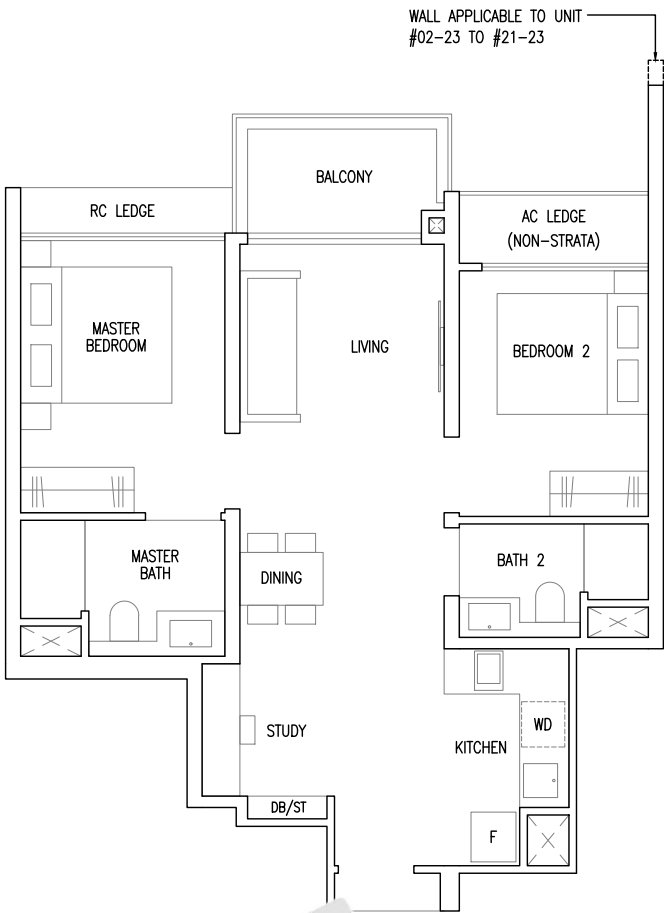
Area includes balcony and Private Enclosed Space (PES) where applicable. All RC Ledges and AC Ledges are excluded from strata area and are non-load bearing. Some units are mirror images of the floor plans shown in the brochure. Orientations and facings will differ depending on the unit you are purchasing, please refer to the key plan. The above plans and illustrations are subject to changes as may be required or approved by the relevant authorities and do not form part of any offer or contract. Areas are estimates only and are subject to final survey. The balcony & PES shall not be enclosed unless with the approved balcony screen. For an illustration of the approved balcony screen, please refer to Annex A of this brochure.

2 Bedroom + Study

TYPE B3S

63 sqm / 678 sqft
Inclusive of 5 sqm Balcony

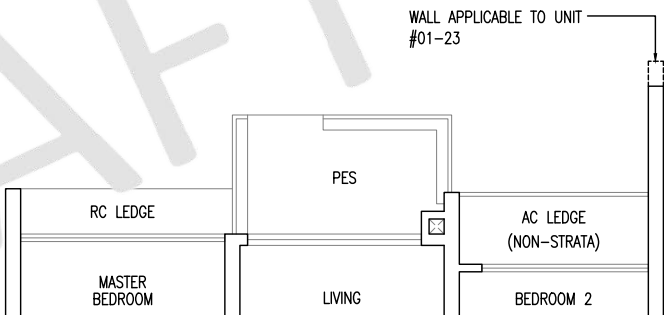
Blk 53 #02-09 to #19-09
Blk 57 #02-23 to #21-23



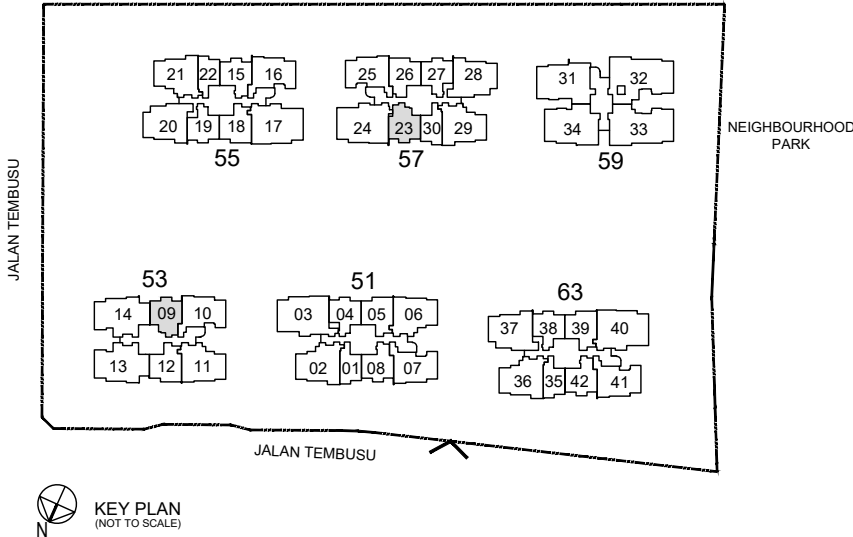
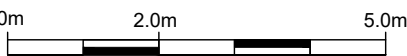
TYPE B3S(p)

63 sqm / 678 sqft
Inclusive of 5 sqm PES

Blk 53 #01-09
Blk 57 #01-23



- F : Fridge
- WD : Washer Cum Dryer
- DB/ST : Distribution Board / Storage
- RC Ledge : Reinforced Concrete Ledge (Non-Strata)
- AC Ledge : Air-Conditioner Ledge (Non-Strata)



Area includes balcony and Private Enclosed Space (PES) where applicable. All RC Ledges and AC Ledges are excluded from strata area and are non-load bearing. Some units are mirror images of the floor plans shown in the brochure. Orientations and facings will differ depending on the unit you are purchasing, please refer to the key plan. The above plans and illustrations are subject to changes as may be required or approved by the relevant authorities and do not form part of any offer or contract. Areas are estimates only and are subject to final survey. The balcony & PES shall not be enclosed unless with the approved balcony screen. For an illustration of the approved balcony screen, please refer to Annex A of this brochure.

2 Bedroom + Study

TYPE B4S

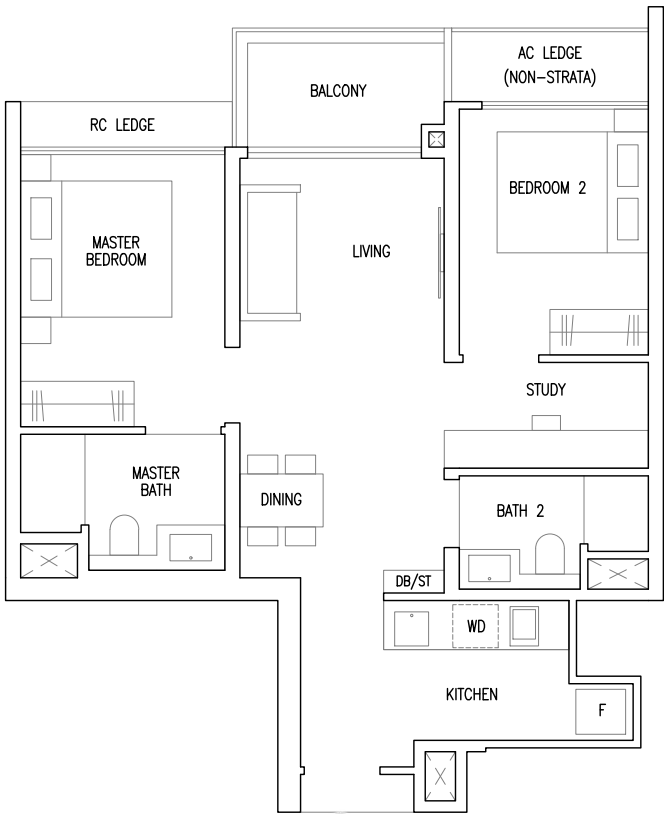
64 sqm / 689 sqft

Inclusive of 5 sqm Balcony

Blk 51 #02-05 to #21-05
Blk 63 #02-39 to #21-39

MIRROR UNIT

Blk 53 #02-12 to #19-12
Blk 55 #02-18 to #21-18



TYPE B4S(p)

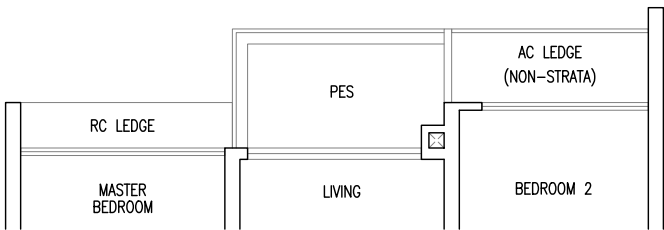
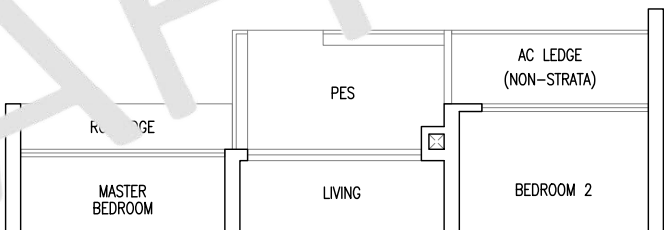
64 sqm / 689 sqft

Inclusive of 5 sqm PES

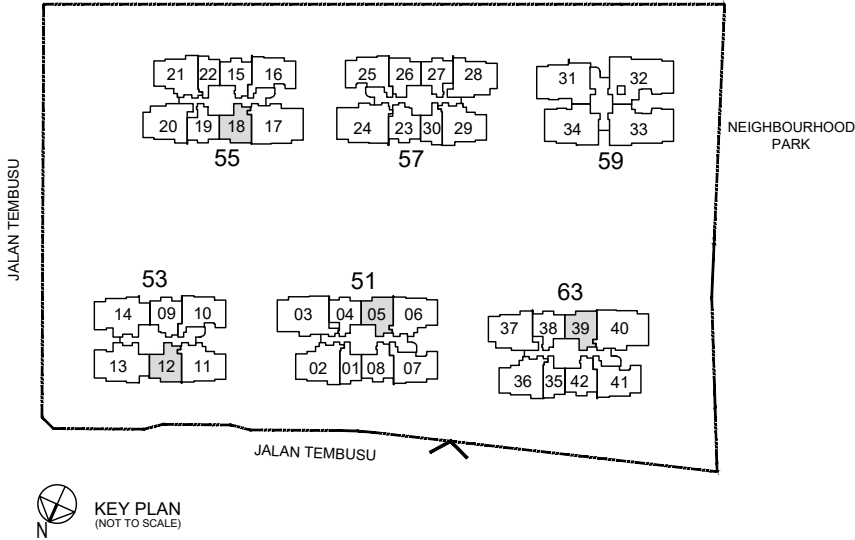
Blk 51 #01-05
Blk 63 #01-39

MIRROR UNIT

Blk 55 #01-18



- F : Fridge
- WD : Washer Cum Dryer
- DB/ST : Distribution Board / Storage
- RC Ledge : Reinforced Concrete Ledge (Non-Strata)
- AC Ledge : Air-Conditioner Ledge (Non-Strata)



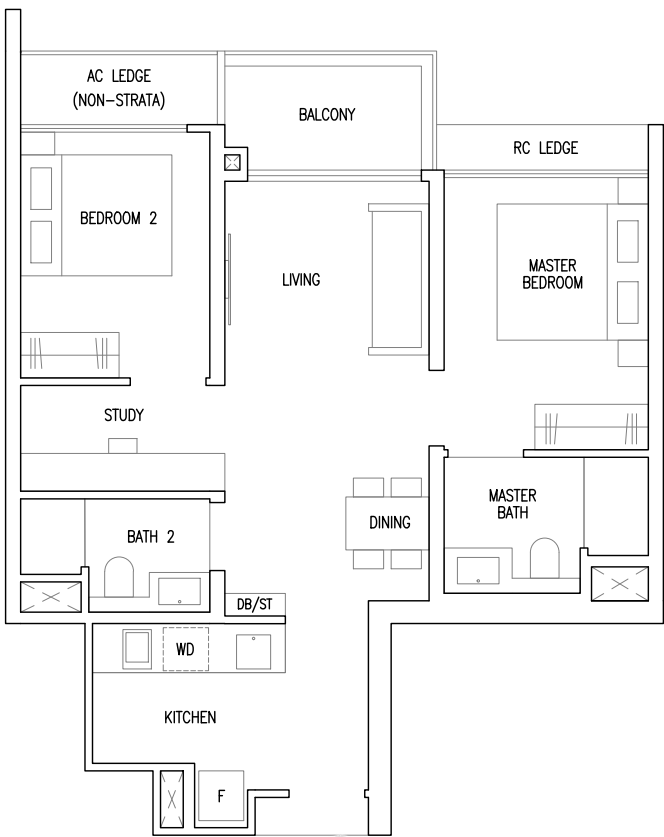
Area includes balcony and Private Enclosed Space (PES) where applicable. All RC Ledges and AC Ledges are excluded from strata area and are non-load bearing. Some units are mirror images of the floor plans shown in the brochure. Orientations and facings will differ depending on the unit you are purchasing, please refer to the key plan. The above plans and illustrations are subject to changes as may be required or approved by the relevant authorities and do not form part of any offer or contract. Areas are estimates only and are subject to final survey. The balcony & PES shall not be enclosed unless with the approved balcony screen. For an illustration of the approved balcony screen, please refer to Annex A of this brochure.

2 Bedroom + Study

TYPE B5S

65 sqm / 700 sqft
Inclusive of 5 sqm Balcony

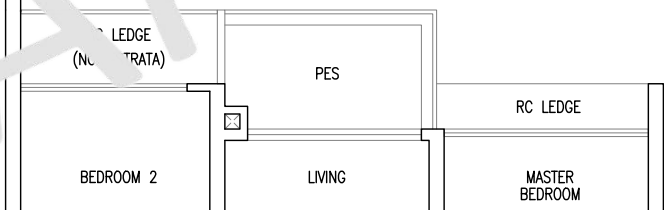
Blk 57 #02-26 to #21-26



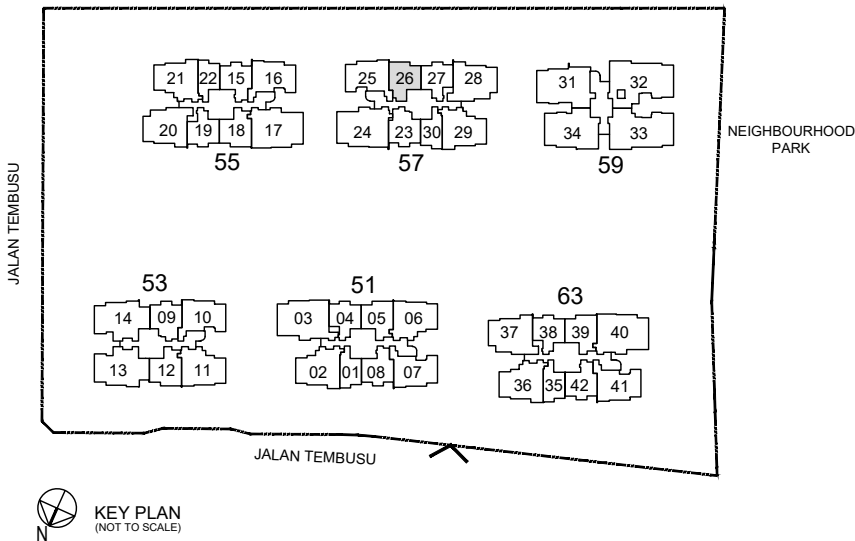
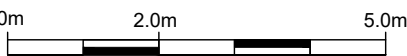
TYPE B5S(p)

65 sqm / 700 sqft
Inclusive of 5 sqm PES

Blk 57 #01-26



- F : Fridge
- WD : Washer Cum Dryer
- DB/ST : Distribution Board / Storage
- RC Ledge : Reinforced Concrete Ledge (Non-Strata)
- AC Ledge : Air-Conditioner Ledge (Non-Strata)



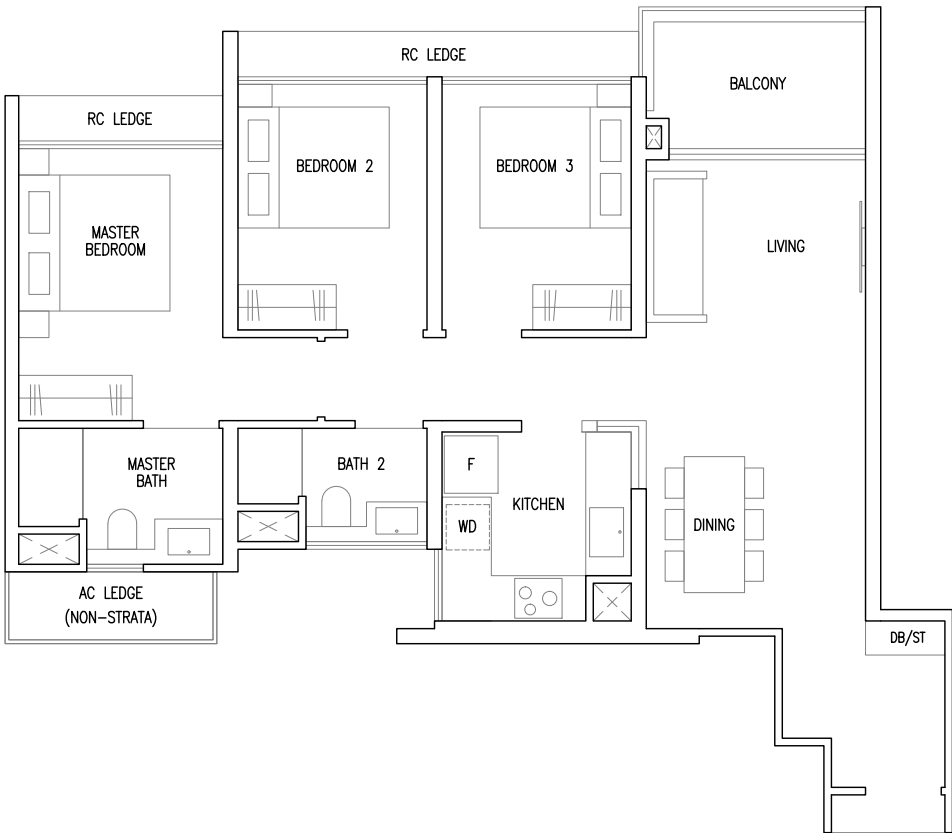
Area includes balcony and Private Enclosed Space (PES) where applicable. All RC Ledges and AC Ledges are excluded from strata area and are non-load bearing. Some units are mirror images of the floor plans shown in the brochure. Orientations and facings will differ depending on the unit you are purchasing, please refer to the key plan. The above plans and illustrations are subject to changes as may be required or approved by the relevant authorities and do not form part of any offer or contract. Areas are estimates only and are subject to final survey. The balcony & PES shall not be enclosed unless with the approved balcony screen. For an illustration of the approved balcony screen, please refer to Annex A of this brochure.

3 Bedroom

TYPE C1

82 sqm / 883 sqft
Inclusive of 6 sqm Balcony

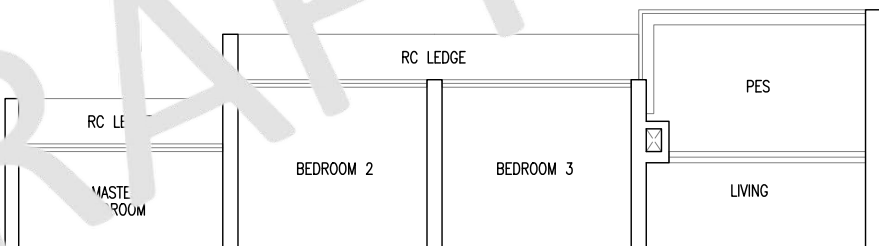
Blk 57 #02-25 to #21-25



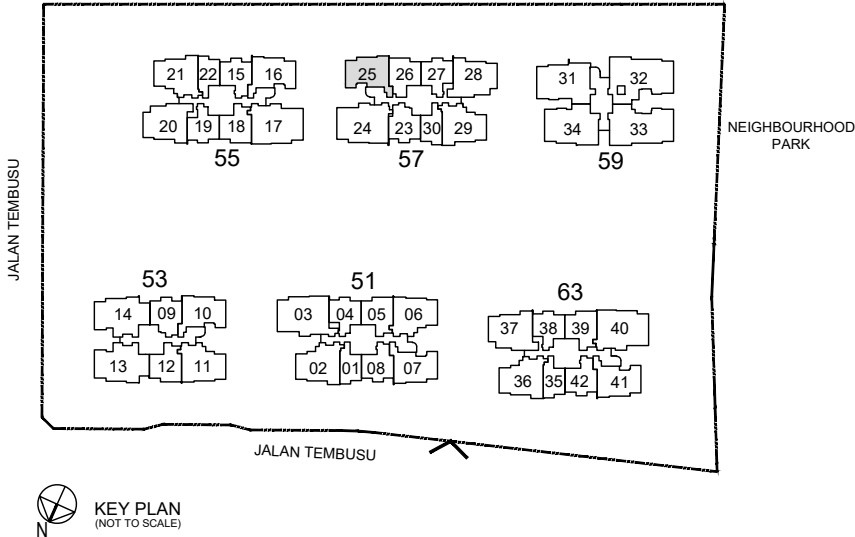
TYPE C1(p)

82 sqm / 883 sqft
Inclusive of 6 sqm PES

Blk 57 #01-25



- F : Fridge
- WD : Washer Cum Dryer
- DB/ST : Distribution Board / Storage
- RC Ledge : Reinforced Concrete Ledge (Non-Strata)
- AC Ledge : Air-Conditioner Ledge (Non-Strata)



Area includes balcony and Private Enclosed Space (PES) where applicable. All RC Ledges and AC Ledges are excluded from strata area and are non-load bearing. Some units are mirror images of the floor plans shown in the brochure. Orientations and facings will differ depending on the unit you are purchasing, please refer to the key plan. The above plans and illustrations are subject to changes as may be required or approved by the relevant authorities and do not form part of any offer or contract. Areas are estimates only and are subject to final survey. The balcony & PES shall not be enclosed unless with the approved balcony screen. For an illustration of the approved balcony screen, please refer to Annex A of this brochure.

3 Bedroom

TYPE C2

84 sqm / 904 sqft

Inclusive of 6 sqm Balcony

Blk 53 #02-10 to #19-10
Blk 55 #02-16 to #21-16

MIRROR UNIT
Blk 51 #03-07 to #21-07
Blk 63 #02-41 to #21-41



TYPE C2(p)

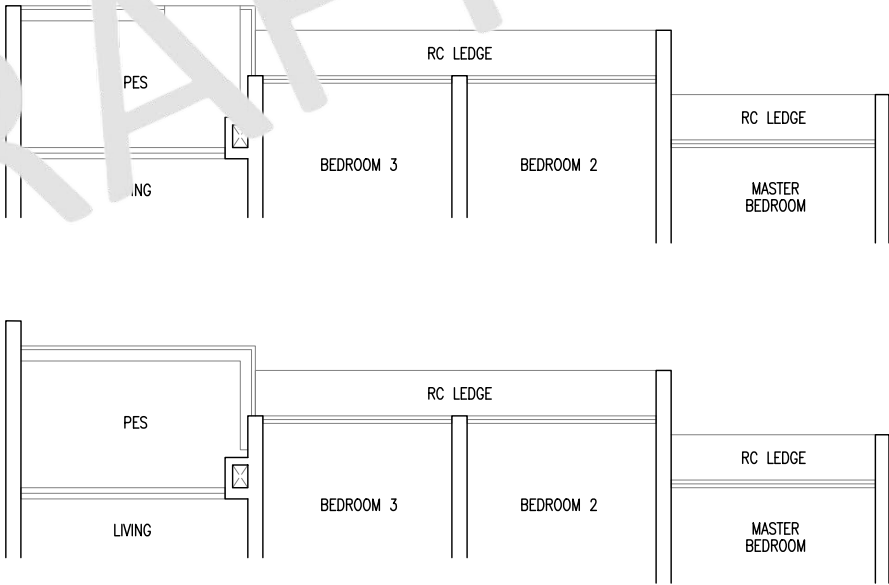
84 sqm / 904 sqft

Inclusive of 6 sqm PES

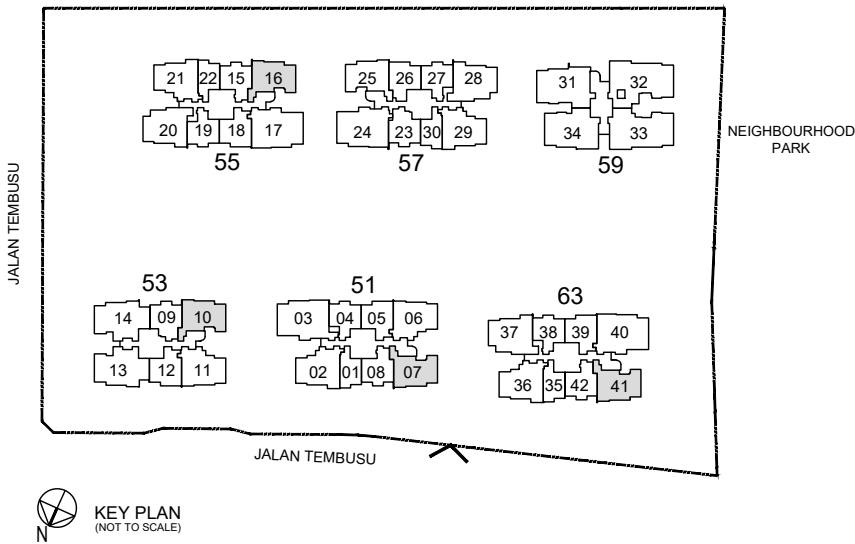
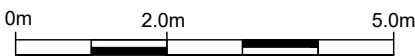
Blk 53 #01-10

Blk 55 #01-16

MIRROR UNIT
Blk 63 #01-41



- F : Fridge
- WD : Washer Cum Dryer
- DB/ST : Distribution Board / Storage
- RC Ledge : Reinforced Concrete Ledge (Non-Strata)
- AC Ledge : Air-Conditioner Ledge (Non-Strata)



Area includes balcony and Private Enclosed Space (PES) where applicable. All RC Ledges and AC Ledges are excluded from strata area and are non-load bearing. Some units are mirror images of the floor plans shown in the brochure. Orientations and facings will differ depending on the unit you are purchasing, please refer to the key plan. The above plans and illustrations are subject to changes as may be required or approved by the relevant authorities and do not form part of any offer or contract. Areas are estimates only and are subject to final survey. The balcony & PES shall not be enclosed unless with the approved balcony screen. For an illustration of the approved balcony screen, please refer to Annex A of this brochure.

3 Bedroom + Study

TYPE C3S

90 sqm / 969 sqft
Inclusive of 6 sqm Balcony

Blk 51 #03-06 to #21-06

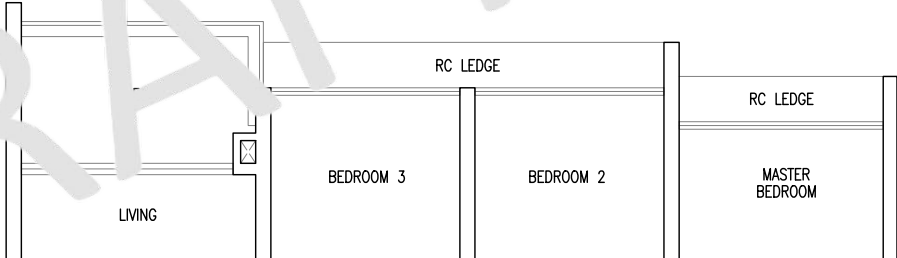
MIRROR UNIT
Blk 53 #02-11 to #19-11



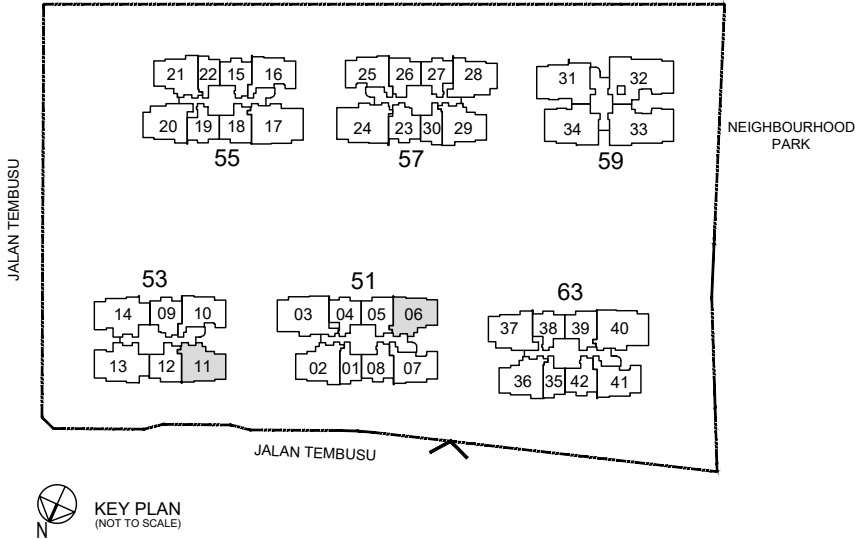
TYPE C3S(p)

90 sqm / 969 sqft
Inclusive of 6 sqm PES

MIRROR UNIT
Blk 53 #01-11



- F : Fridge
- WD : Washer Cum Dryer
- DB : Distribution Board
- RC Ledge : Reinforced Concrete Ledge (Non-Strata)
- AC Ledge : Air-Conditioner Ledge (Non-Strata)



Area includes balcony and Private Enclosed Space (PES) where applicable. All RC Ledges and AC Ledges are excluded from strata area and are non-load bearing. Some units are mirror images of the floor plans shown in the brochure. Orientations and facings will differ depending on the unit you are purchasing, please refer to the key plan. The above plans and illustrations are subject to changes as may be required or approved by the relevant authorities and do not form part of any offer or contract. Areas are estimates only and are subject to final survey. The balcony & PES shall not be enclosed unless with the approved balcony screen. For an illustration of the approved balcony screen, please refer to Annex A of this brochure.

3 Bedroom + Study

TYPE C4S

92 sqm / 990 sqft
Inclusive of 6 sqm Balcony

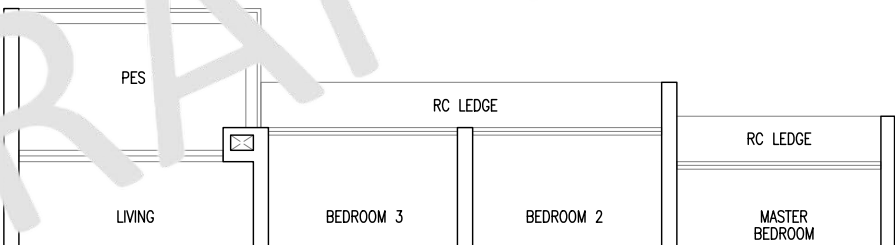
Blk 51 #02-02 to #21-02
Blk 63 #03-36 to #21-36



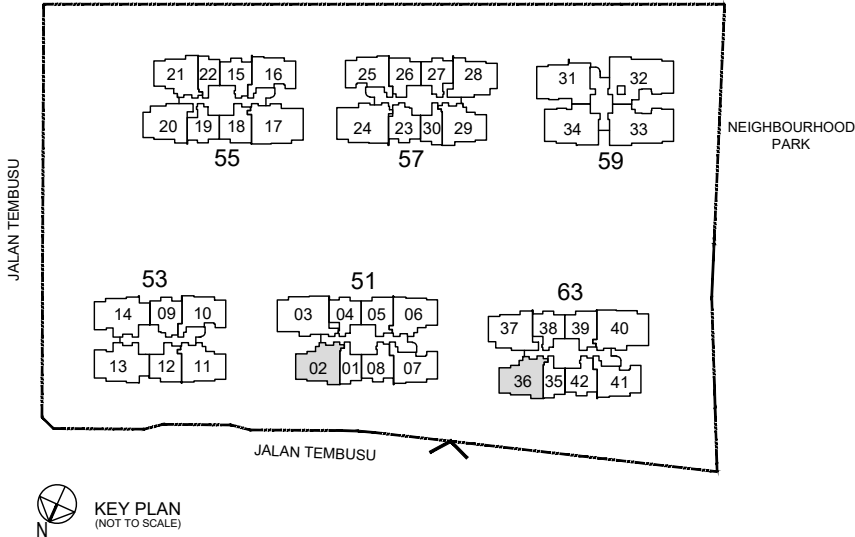
TYPE C4S(p)

92 sqm / 990 sqft
Inclusive of 6 sqm PES

Blk 51 #01-02



- F : Fridge
- WD : Washer Cum Dryer
- DB : Distribution Board
- RC Ledge : Reinforced Concrete Ledge (Non-Strata)
- AC Ledge : Air-Conditioner Ledge (Non-Strata)



Area includes balcony and Private Enclosed Space (PES) where applicable. All RC Ledges and AC Ledges are excluded from strata area and are non-load bearing. Some units are mirror images of the floor plans shown in the brochure. Orientations and facings will differ depending on the unit you are purchasing, please refer to the key plan. The above plans and illustrations are subject to changes as may be required or approved by the relevant authorities and do not form part of any offer or contract. Areas are estimates only and are subject to final survey. The balcony & PES shall not be enclosed unless with the approved balcony screen. For an illustration of the approved balcony screen, please refer to Annex A of this brochure.

3 Bedroom Flexi

TYPE C5F

92 sqm / 990 sqft

Inclusive of 6 sqm Balcony

Blk 55 #02-21 to #21-21

Blk 57 #02-29 to #21-29

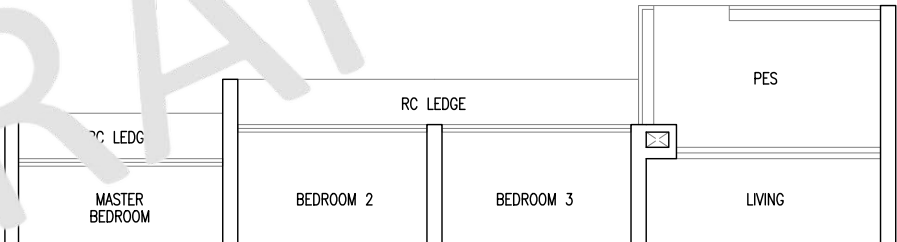


TYPE C5F(p)

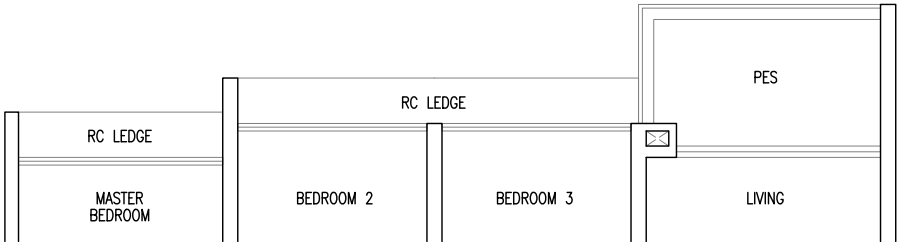
92 sqm / 990 sqft

Inclusive of 6 sqm PES

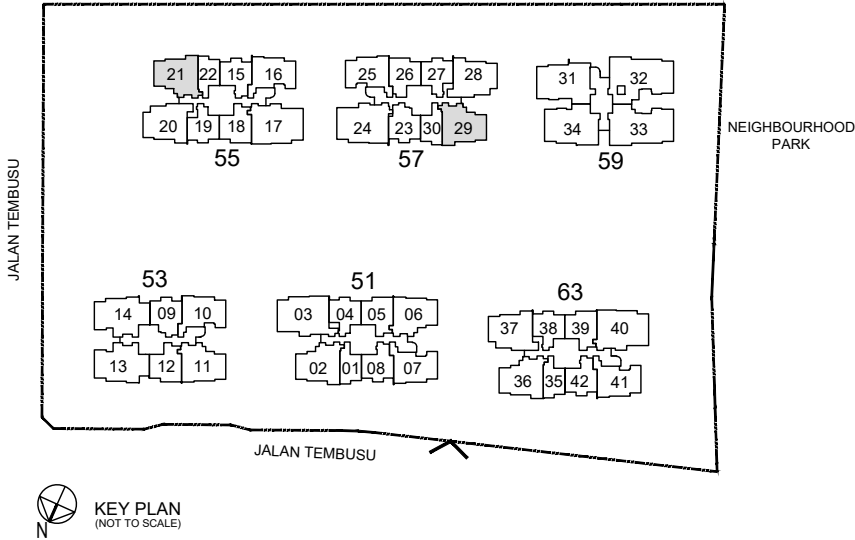
Blk 57 #01-29



Blk 55 #01-21



- F : Fridge
- WD : Washer Cum Dryer
- DB : Distribution Board
- RC Ledge : Reinforced Concrete Ledge (Non-Strata)
- AC Ledge : Air-Conditioner Ledge (Non-Strata)



Area includes balcony and Private Enclosed Space (PES) where applicable. All RC Ledges and AC Ledges are excluded from strata area and are non-load bearing. Some units are mirror images of the floor plans shown in the brochure. Orientations and facings will differ depending on the unit you are purchasing, please refer to the key plan. The above plans and illustrations are subject to changes as may be required or approved by the relevant authorities and do not form part of any offer or contract. Areas are estimates only and are subject to final survey. The balcony & PES shall not be enclosed unless with the approved balcony screen. For an illustration of the approved balcony screen, please refer to Annex A of this brochure.

3 Bedroom + Study

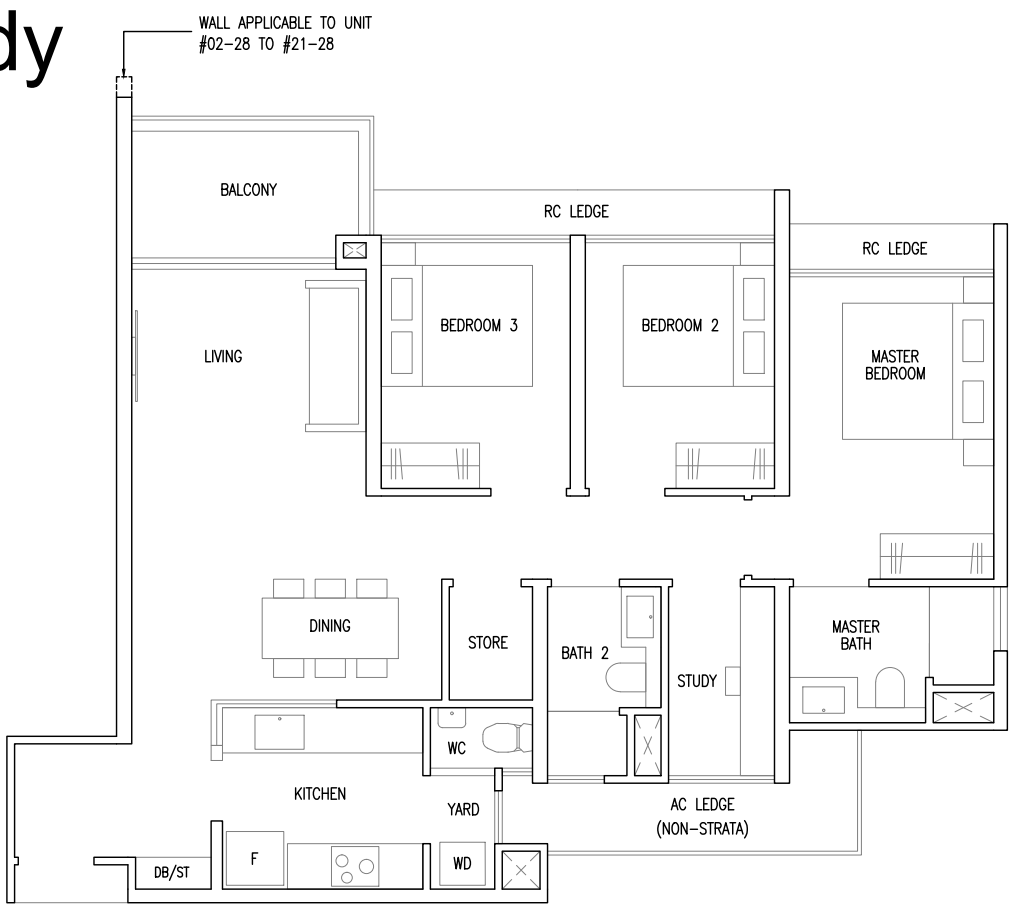
TYPE C6S

95 sqm / 1023 sqft

Inclusive of 6 sqm Balcony

Blk 55 #02-20 to #21-20
Blk 57 #02-28 to #21-28

MIRROR UNIT
Blk 63 #03-37 to #21-37

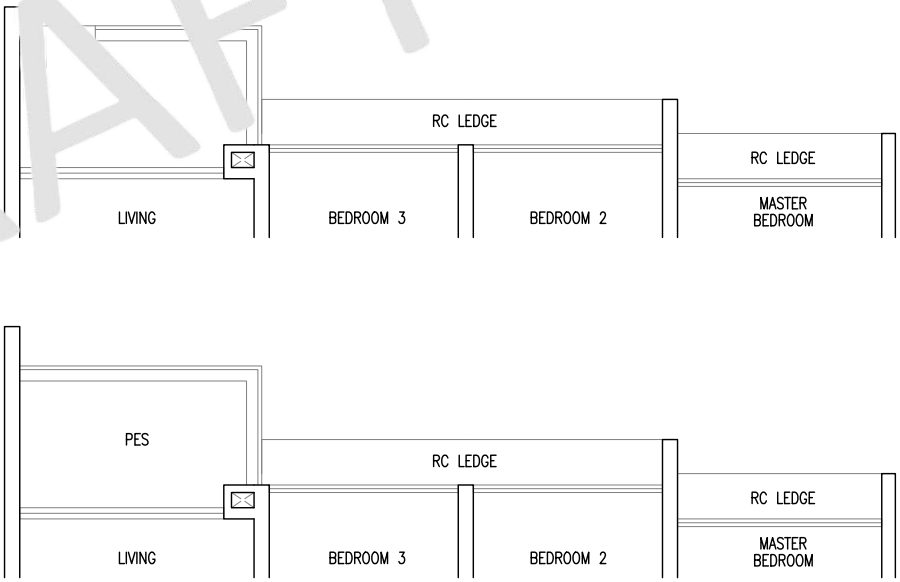


TYPE C6S(p)

95 sqm / 1023 sqft

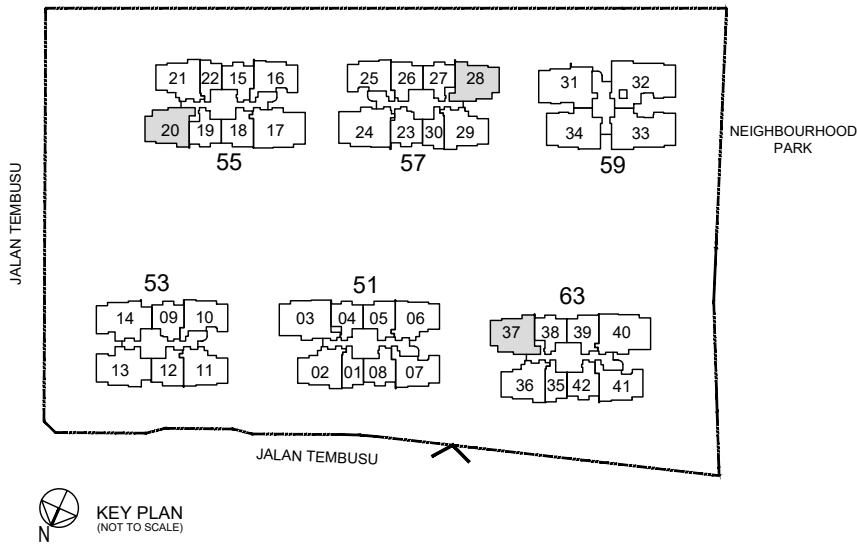
Inclusive of 6 sqm PES

Blk 55 #01-20



Blk 57 #01-28

- F : Fridge
- WD : Washer Cum Dryer
- DB/ST : Distribution Board / Storage
- RC Ledge : Reinforced Concrete Ledge (Non-Strata)
- AC Ledge : Air-Conditioner Ledge (Non-Strata)



Area includes balcony and Private Enclosed Space (PES) where applicable. All RC Ledges and AC Ledges are excluded from strata area and are non-load bearing. Some units are mirror images of the floor plans shown in the brochure. Orientations and facings will differ depending on the unit you are purchasing, please refer to the key plan. The above plans and illustrations are subject to changes as may be required or approved by the relevant authorities and do not form part of any offer or contract. Areas are estimates only and are subject to final survey. The balcony & PES shall not be enclosed unless with the approved balcony screen. For an illustration of the approved balcony screen, please refer to Annex A of this brochure.

4 Bedroom + Study

TYPE D1S

107 sqm / 1152 sqft

Inclusive of 6 sqm Balcony

Blk 53 #02-13 to #19-13



TYPE D1S(p)

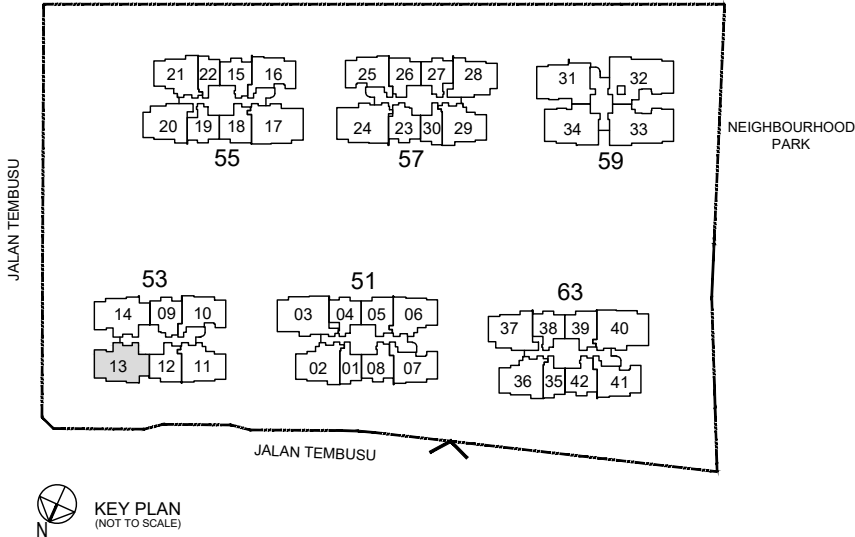
107 sqm / 1152 sqft

Inclusive of 6 sqm PES

Blk 53 #01-13



- F : Fridge
- WD : Washer Cum Dryer
- DB : Distribution Board
- RC Ledge : Reinforced Concrete Ledge (Non-Strata)
- AC Ledge : Air-Conditioner Ledge (Non-Strata)



Area includes balcony and Private Enclosed Space (PES) where applicable. All RC Ledges and AC Ledges are excluded from strata area and are non-load bearing. Some units are mirror images of the floor plans shown in the brochure. Orientations and facings will differ depending on the unit you are purchasing, please refer to the key plan. The above plans and illustrations are subject to changes as may be required or approved by the relevant authorities and do not form part of any offer or contract. Areas are estimates only and are subject to final survey. The balcony & PES shall not be enclosed unless with the approved balcony screen. For an illustration of the approved balcony screen, please refer to Annex A of this brochure.

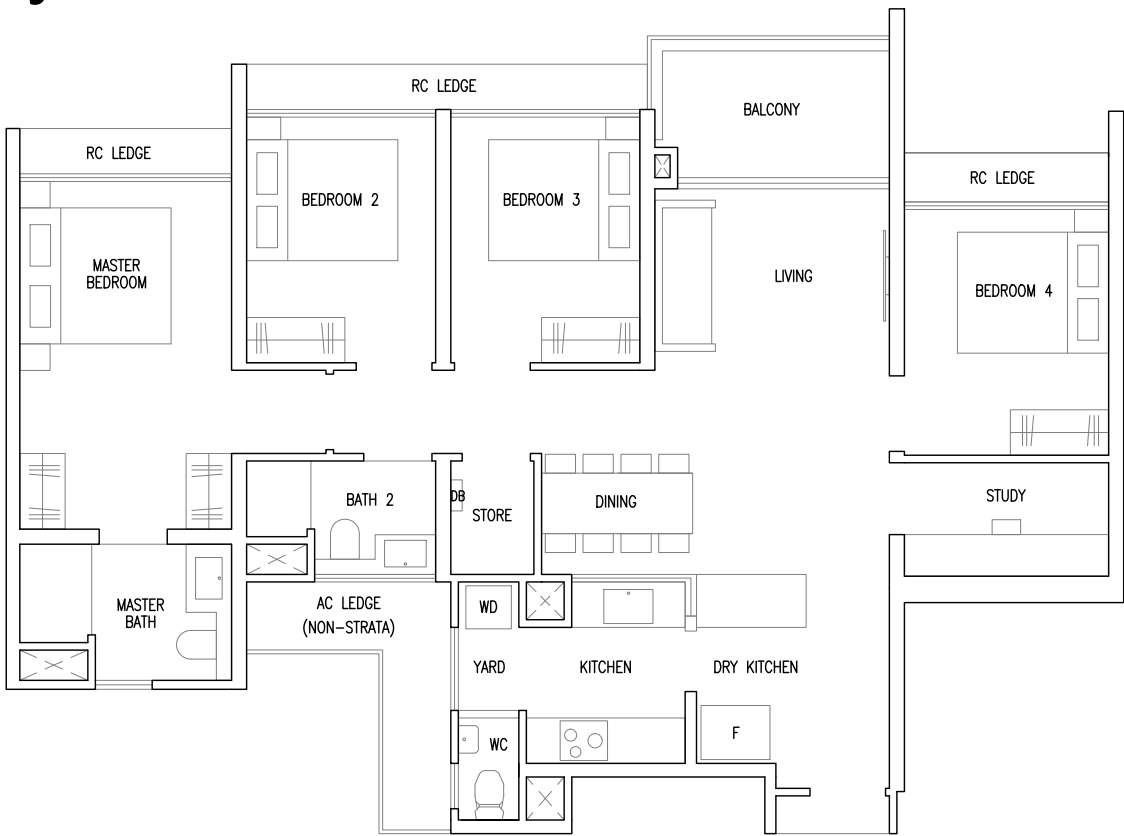
4 Bedroom + Study

TYPE D2S

107 sqm / 1152 sqft

Inclusive of 6 sqm Balcony

Blk 53 #02-14 to #19-14

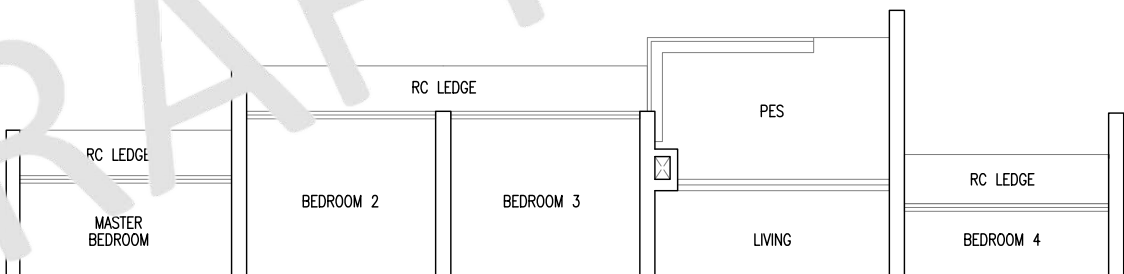


TYPE D2S(p)

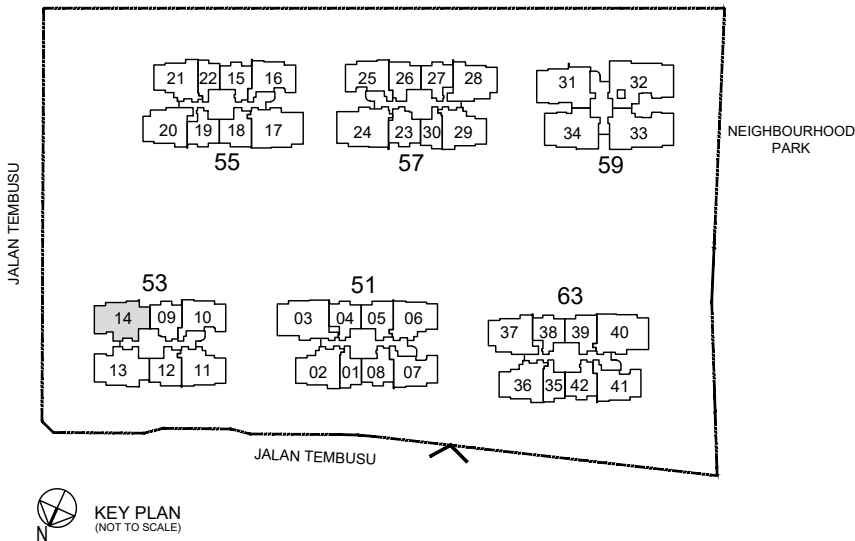
107 sqm / 1152 sqft

Inclusive of 6 sqm PES

Blk 53 #01-14



- F : Fridge
- WD : Washer Cum Dryer
- DB : Distribution Board
- RC Ledge : Reinforced Concrete Ledge (Non-Strata)
- AC Ledge : Air-Conditioner Ledge (Non-Strata)



Area includes balcony and Private Enclosed Space (PES) where applicable. All RC Ledges and AC Ledges are excluded from strata area and are non-load bearing. Some units are mirror images of the floor plans shown in the brochure. Orientations and facings will differ depending on the unit you are purchasing, please refer to the key plan. The above plans and illustrations are subject to changes as may be required or approved by the relevant authorities and do not form part of any offer or contract. Areas are estimates only and are subject to final survey. The balcony & PES shall not be enclosed unless with the approved balcony screen. For an illustration of the approved balcony screen, please refer to Annex A of this brochure.

4 Bedroom Premium

TYPE D3P

117 sqm / 1259 sqft

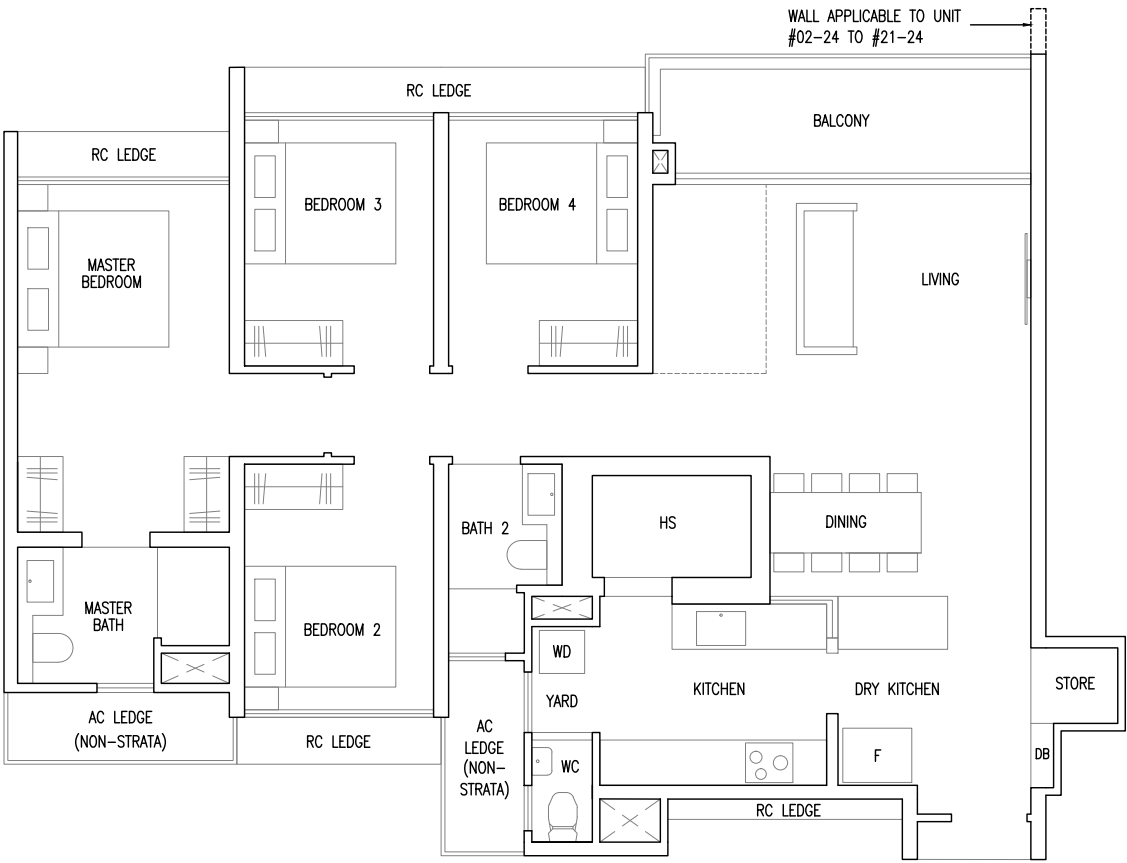
Inclusive of 8 sqm Balcony

Blk 55 #02-17 to #21-17

MIRROR UNIT

Blk 57 #02-24 to #21-24

Blk 63 #02-40 to #21-40



TYPE D3P(p)

117 sqm / 1259 sqft

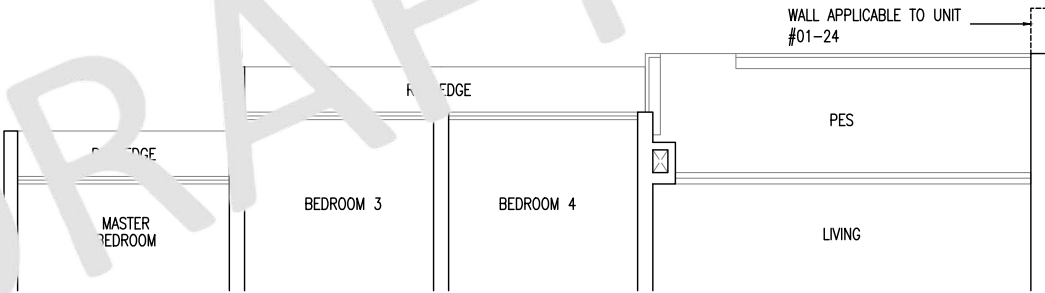
Inclusive of 8 sqm PES

Blk 55 #01-17

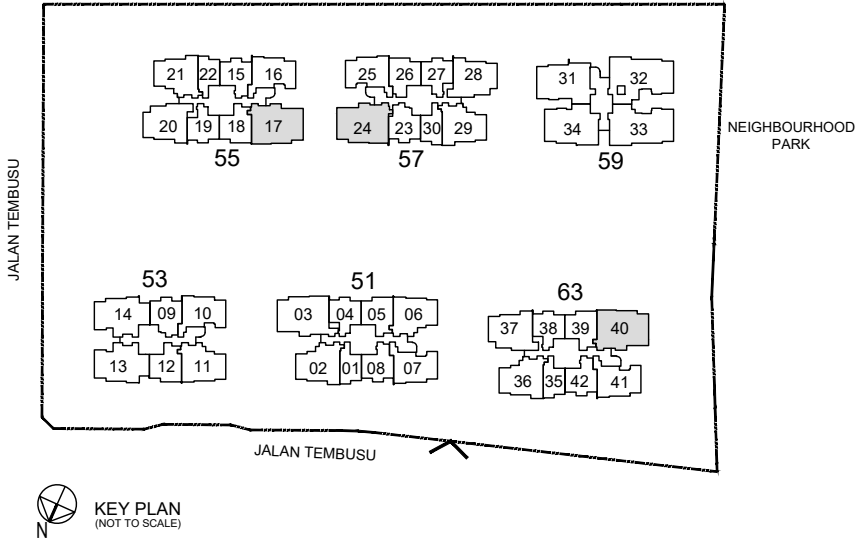
MIRROR UNIT

Blk 57 #01-24

Blk 63 #01-40



- F : Fridge
- WD : Washer Cum Dryer
- HS : Household Shelter
- DB : Distribution Board
- RC Ledge : Reinforced Concrete Ledge (Non-Strata)
- AC Ledge : Air-Conditioner Ledge (Non-Strata)



Area includes balcony and Private Enclosed Space (PES) where applicable. All RC Ledges and AC Ledges are excluded from strata area and are non-load bearing. Some units are mirror images of the floor plans shown in the brochure. Orientations and facings will differ depending on the unit you are purchasing, please refer to the key plan. The above plans and illustrations are subject to changes as may be required or approved by the relevant authorities and do not form part of any offer or contract. Areas are estimates only and are subject to final survey. The balcony & PES shall not be enclosed unless with the approved balcony screen. For an illustration of the approved balcony screen, please refer to Annex A of this brochure.

4 Bedroom Premium

TYPE D4P

118 sqm / 1270 sqft

Inclusive of 8 sqm Balcony

Blk 51 #02-03 to #21-03

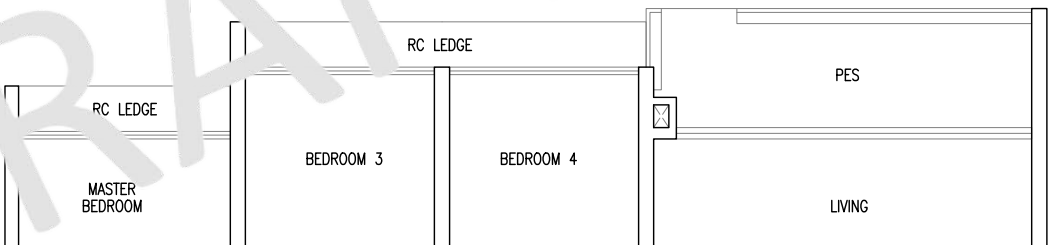


TYPE D4P(p)

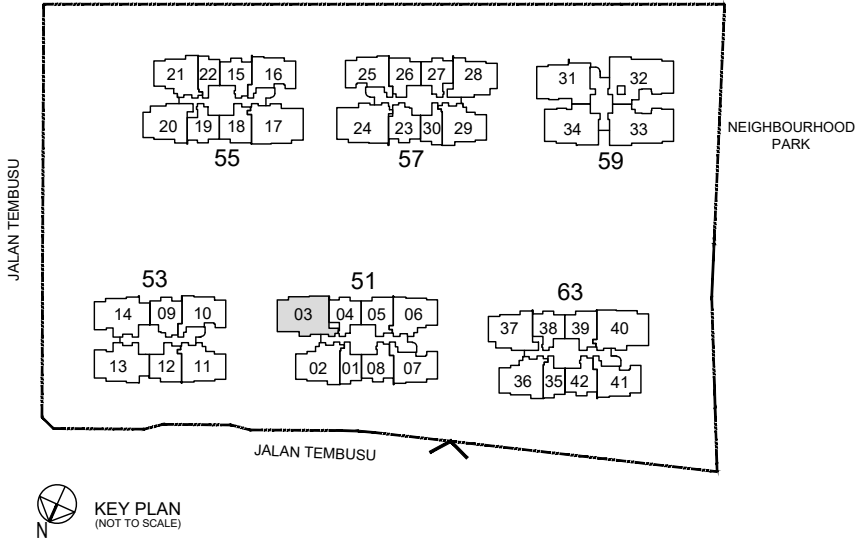
118 sqm / 1270 sqft

Inclusive of 8 sqm PES

Blk 51 #01-03



- F : Fridge
- WD : Washer Cum Dryer
- HS : Household Shelter
- DB : Distribution Board
- RC Ledge : Reinforced Concrete Ledge (Non-Strata)
- AC Ledge : Air-Conditioner Ledge (Non-Strata)



Area includes balcony and Private Enclosed Space (PES) where applicable. All RC Ledges and AC Ledges are excluded from strata area and are non-load bearing. Some units are mirror images of the floor plans shown in the brochure. Orientations and facings will differ depending on the unit you are purchasing, please refer to the key plan. The above plans and illustrations are subject to changes as may be required or approved by the relevant authorities and do not form part of any offer or contract. Areas are estimates only and are subject to final survey. The balcony & PES shall not be enclosed unless with the approved balcony screen. For an illustration of the approved balcony screen, please refer to Annex A of this brochure.

4 Bedroom Luxe + Study

TYPE D5LS

121 sqm / 1302 sqft

Inclusive of 10 sqm Balcony

Blk 59 #02-34 to #17-34

TYPE D5LS(H)

121 sqm / 1302 sqft

Inclusive of 10 sqm Balcony

(High ceiling of 5 metres over living / dining)

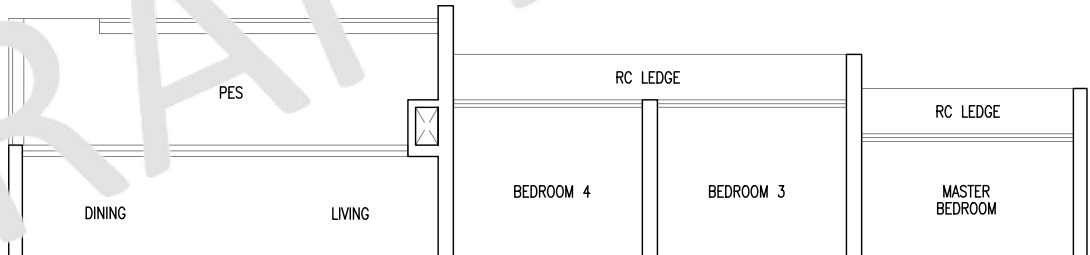
Blk 59 #18-34

TYPE D5LS(p)

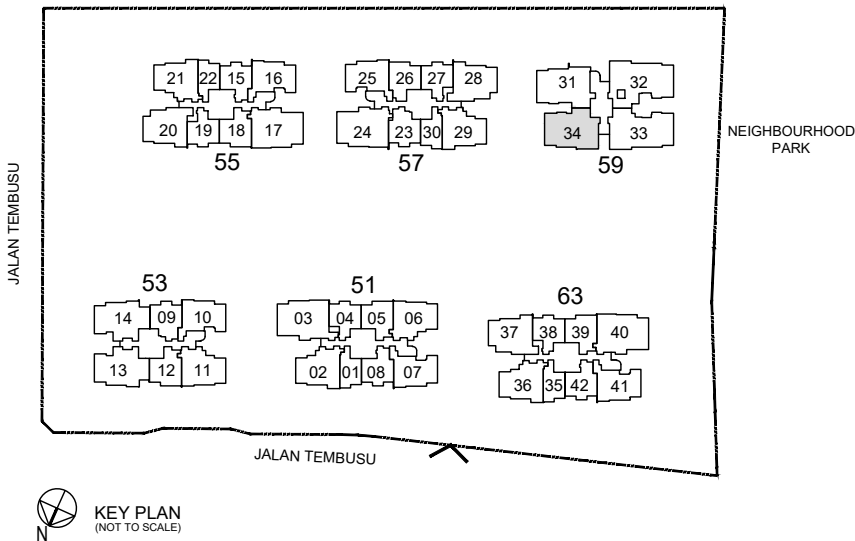
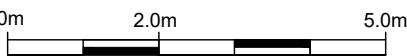
121 sqm / 1302 sqft

Inclusive of 10 sqm PES

Blk 59 #01-34



- F : Fridge
- W&D : Washer & Dryer
- O&S : Oven & Steamer
- C : Wine Chiller
- HS : Household Shelter
- DB/ST : Distribution Board / Storage
- RC Ledge : Reinforced Concrete Ledge (Non-Strata)
- AC Ledge : Air-Conditioner Ledge (Non-Strata)



Area includes balcony and Private Enclosed Space (PES) where applicable. All RC Ledges and AC Ledges are excluded from strata area and are non-load bearing. Some units are mirror images of the floor plans shown in the brochure. Orientations and facings will differ depending on the unit you are purchasing, please refer to the key plan. The above plans and illustrations are subject to changes as may be required or approved by the relevant authorities and do not form part of any offer or contract. Areas are estimates only and are subject to final survey. The balcony & PES shall not be enclosed unless with the approved balcony screen. For an illustration of the approved balcony screen, please refer to Annex A of this brochure.

4 Bedroom Luxe + Study

TYPE D6LS

122 sqm / 1313 sqft

Inclusive of 10 sqm Balcony

Blk 59 #03-31 to #17-31

TYPE D6LS(H)

122 sqm / 1313 sqft

Inclusive of 10 sqm Balcony

(High ceiling of 5 metres over living / dining)

Blk 59 #18-31

TYPE D6LS

122 sqm / 1313 sqft

Inclusive of 10 sqm Balcony

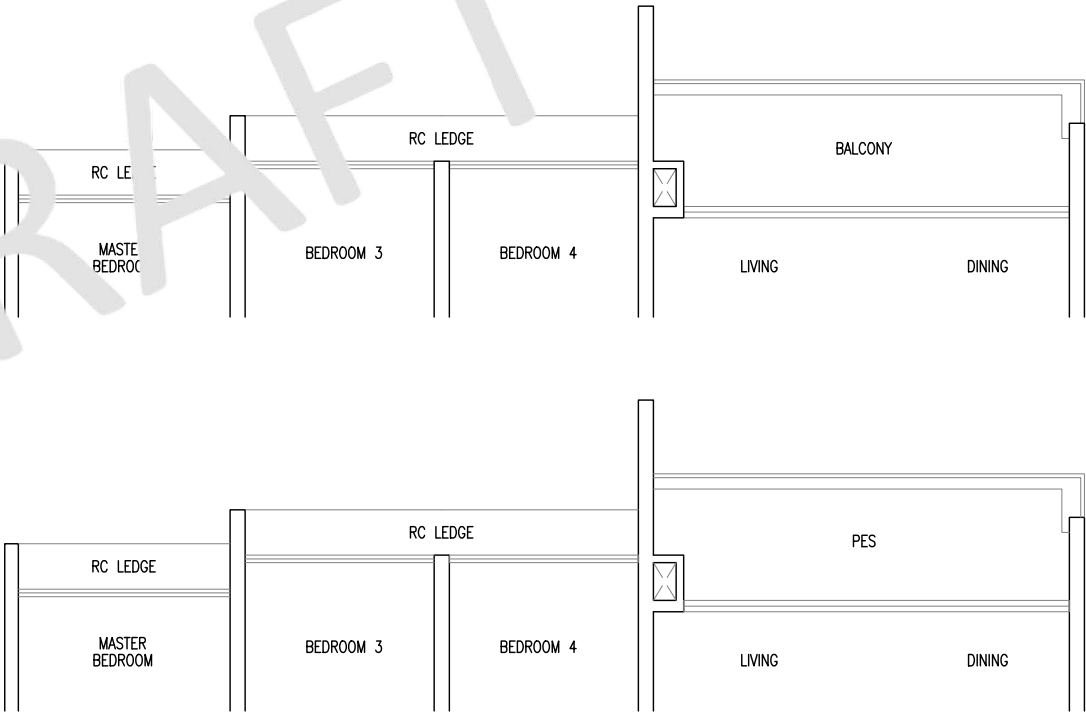
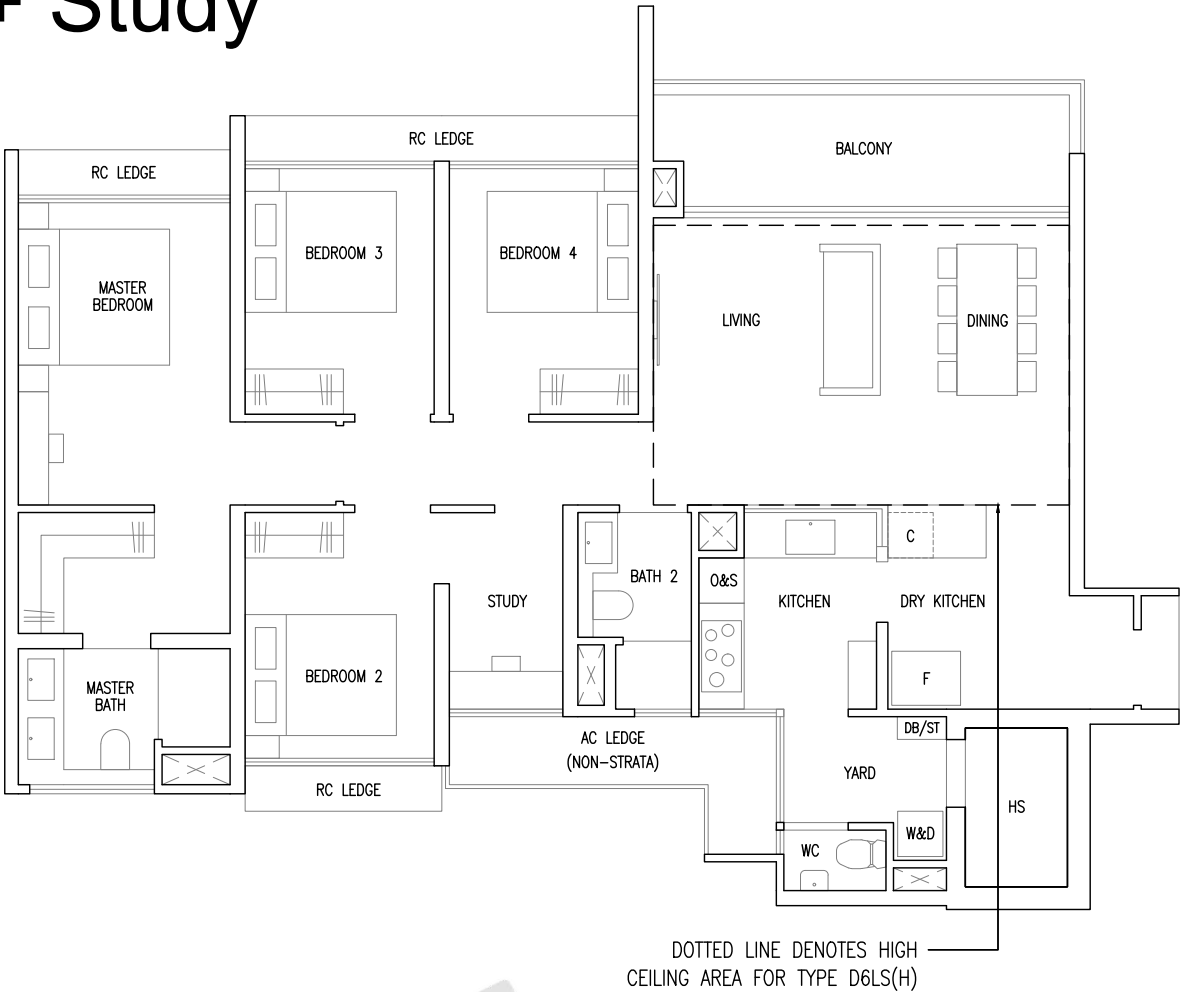
Blk 59 #02-31

TYPE D6LS(p)

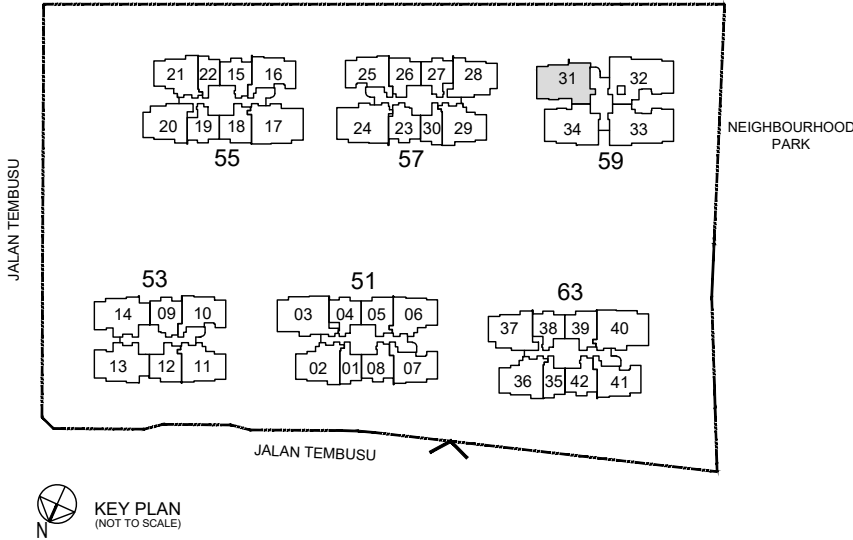
122 sqm / 1313 sqft

Inclusive of 10 sqm PES

Blk 59 #01-31



- F : Fridge
- W&D : Washer & Dryer
- O&S : Oven & Steamer
- C : Wine Chiller
- HS : Household Shelter
- DB/ST : Distribution Board / Storage
- RC Ledge : Reinforced Concrete Ledge (Non-Strata)
- AC Ledge : Air-Conditioner Ledge (Non-Strata)



Area includes balcony and Private Enclosed Space (PES) where applicable. All RC Ledges and AC Ledges are excluded from strata area and are non-load bearing. Some units are mirror images of the floor plans shown in the brochure. Orientations and facings will differ depending on the unit you are purchasing, please refer to the key plan. The above plans and illustrations are subject to changes as may be required or approved by the relevant authorities and do not form part of any offer or contract. Areas are estimates only and are subject to final survey. The balcony & PES shall not be enclosed unless with the approved balcony screen. For an illustration of the approved balcony screen, please refer to Annex A of this brochure.

5 Bedroom Luxe

TYPE E1L

137 sqm / 1475 sqft

Inclusive of 11 sqm Balcony

Blk 59 #02-33 to #17-33

TYPE E1L(H)

137 sqm / 1475 sqft

Inclusive of 11 sqm Balcony

(High ceiling of 5 metres over living / dining)

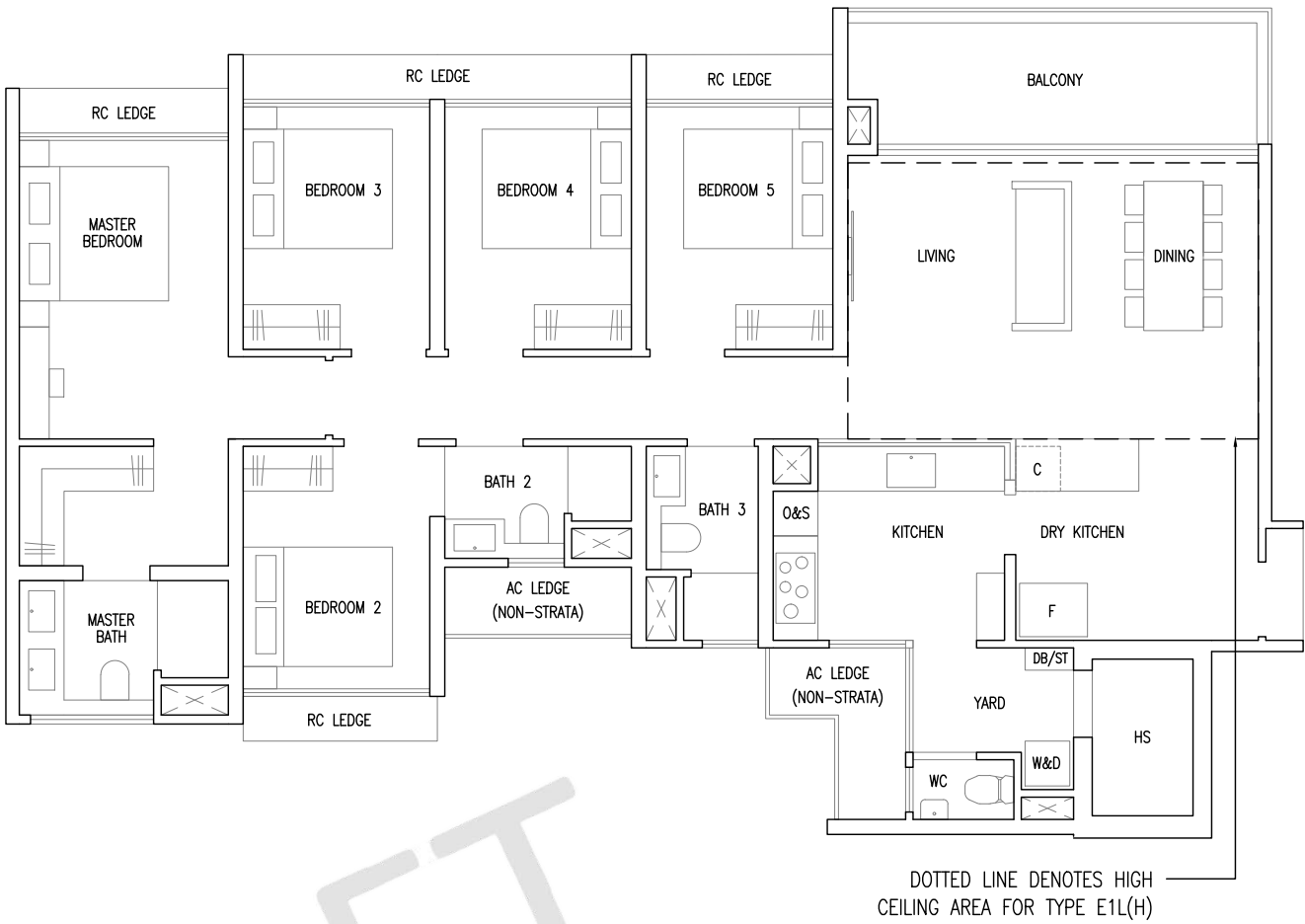
Blk 59 #18-33

TYPE E1L(p)

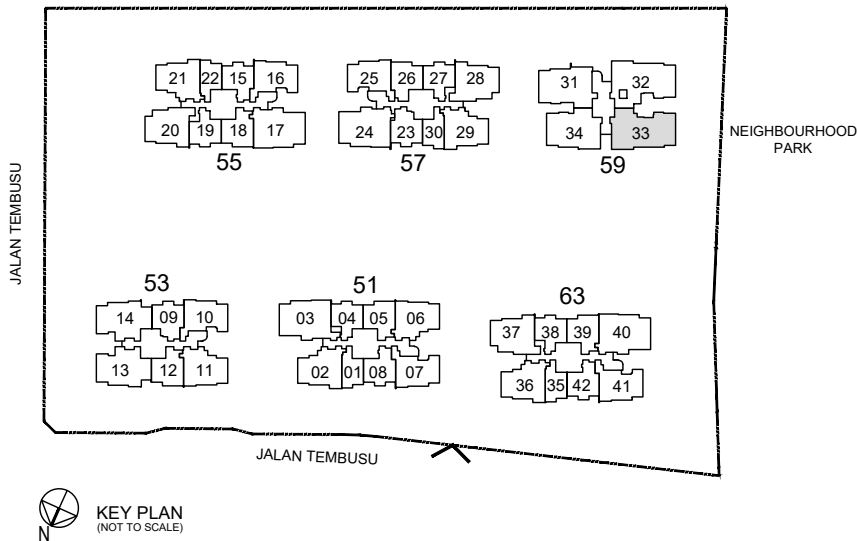
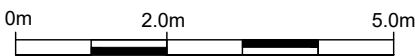
137 sqm / 1475 sqft

Inclusive of 11 sqm PES

Blk 59 #01-33



- F : Fridge
- W&D : Washer & Dryer
- O&S : Oven & Steamer
- C : Wine Chiller
- HS : Household Shelter
- DB/ST : Distribution Board / Storage
- RC Ledge : Reinforced Concrete Ledge (Non-Strata)
- AC Ledge : Air-Conditioner Ledge (Non-Strata)



Area includes balcony and Private Enclosed Space (PES) where applicable. All RC Ledges and AC Ledges are excluded from strata area and are non-load bearing. Some units are mirror images of the floor plans shown in the brochure. Orientations and facings will differ depending on the unit you are purchasing, please refer to the key plan. The above plans and illustrations are subject to changes as may be required or approved by the relevant authorities and do not form part of any offer or contract. Areas are estimates only and are subject to final survey. The balcony & PES shall not be enclosed unless with the approved balcony screen. For an illustration of the approved balcony screen, please refer to Annex A of this brochure.

5 Bedroom Luxe

TYPE E2L(p)

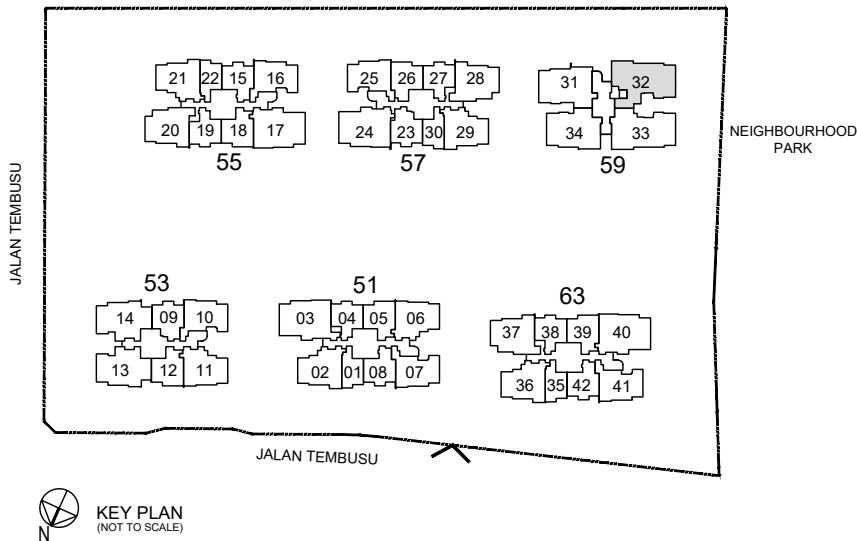
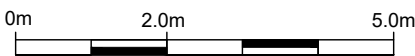
138 sqm / 1485 sqft

Inclusive of 11 sqm PES

Blk 59 #01-32



- F : Fridge
- W&D : Washer & Dryer
- O&S : Oven & Steamer
- C : Wine Chiller
- HS : Household Shelter
- DB/ST : Distribution Board / Storage
- RC Ledge : Reinforced Concrete Ledge (Non-Strata)
- AC Ledge : Air-Conditioner Ledge (Non-Strata)



Area includes balcony and Private Enclosed Space (PES) where applicable. All RC Ledges and AC Ledges are excluded from strata area and are non-load bearing. Some units are mirror images of the floor plans shown in the brochure. Orientations and facings will differ depending on the unit you are purchasing, please refer to the key plan. The above plans and illustrations are subject to changes as may be required or approved by the relevant authorities and do not form part of any offer or contract. Areas are estimates only and are subject to final survey. The balcony & PES shall not be enclosed unless with the approved balcony screen. For an illustration of the approved balcony screen, please refer to Annex A of this brochure.

5 Bedroom Luxe

TYPE E3L

145 sqm / 1561 sqft

Inclusive of 11 sqm Balcony

Blk 59 #02-32 to #17-32

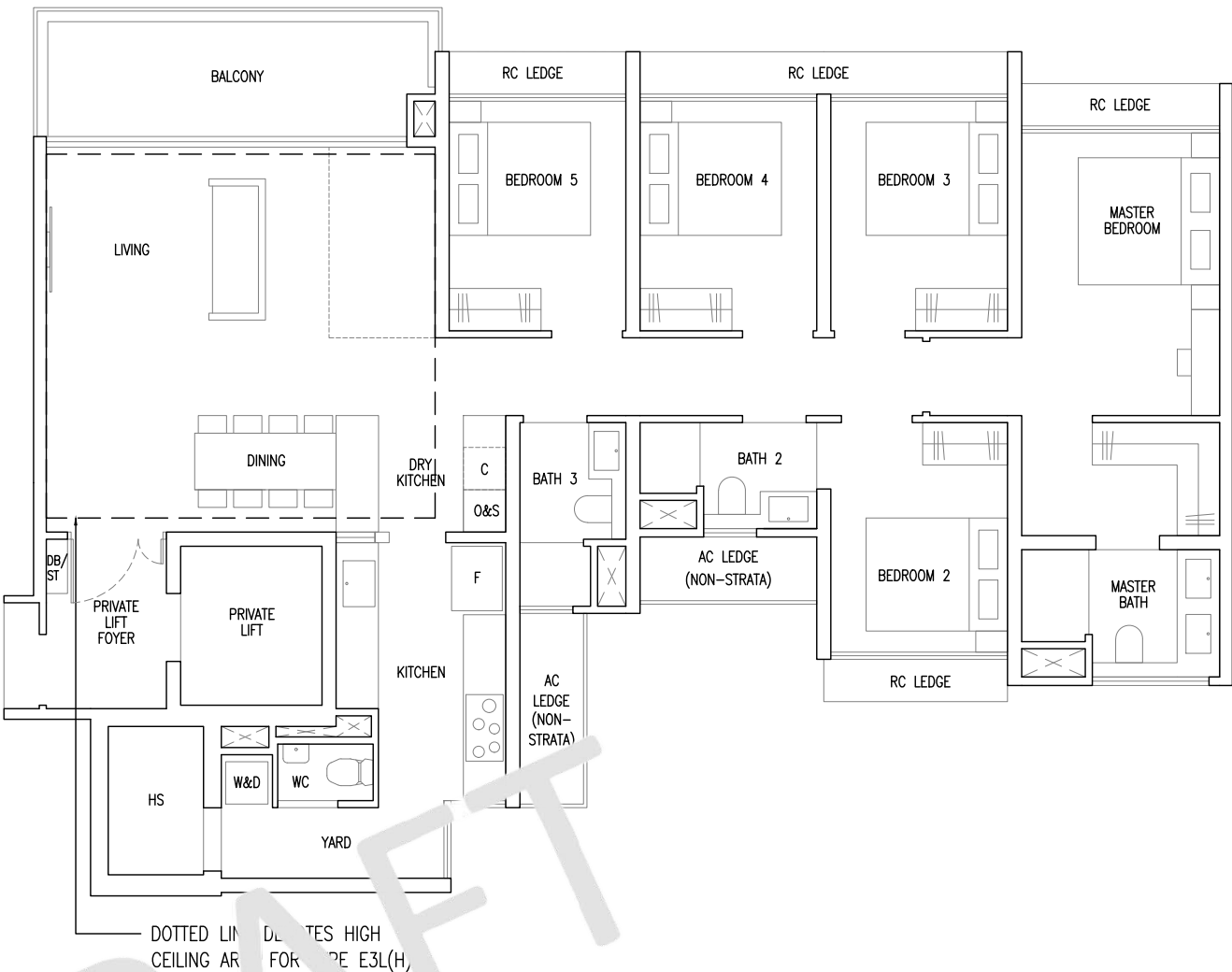
TYPE E3L(H)

145 sqm / 1561 sqft

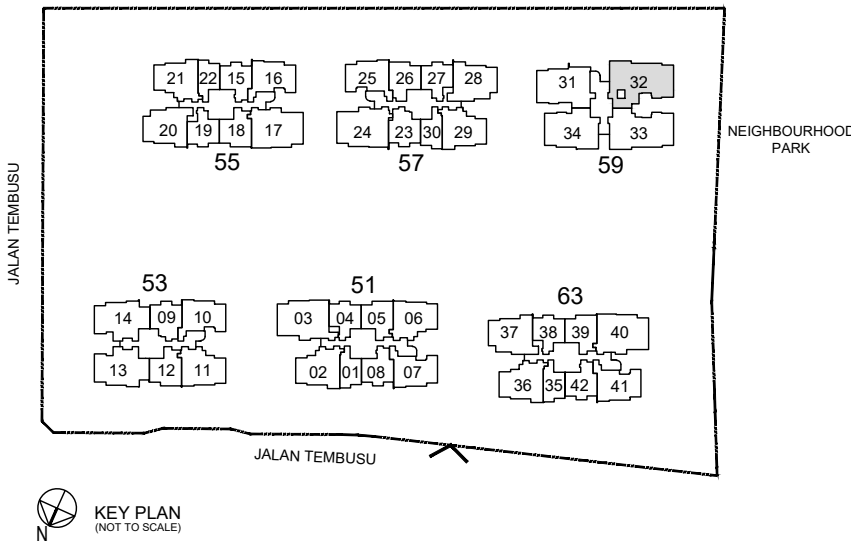
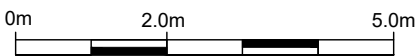
Inclusive of 11 sqm Balcony

(High ceiling of 5 metres over living / dining)

Blk 59 #18-32



- F : Fridge
- W&D : Washer & Dryer
- O&S : Oven & Steamer
- C : Wine Chiller
- HS : Household Shelter
- DB/ST : Distribution Board / Storage
- RC Ledge : Reinforced Concrete Ledge (Non-Strata)
- AC Ledge : Air-Conditioner Ledge (Non-Strata)



Area includes balcony and Private Enclosed Space (PES) where applicable. All RC Ledges and AC Ledges are excluded from strata area and are non-load bearing. Some units are mirror images of the floor plans shown in the brochure. Orientations and facings will differ depending on the unit you are purchasing, please refer to the key plan. The above plans and illustrations are subject to changes as may be required or approved by the relevant authorities and do not form part of any offer or contract. Areas are estimates only and are subject to final survey. The balcony & PES shall not be enclosed unless with the approved balcony screen. For an illustration of the approved balcony screen, please refer to Annex A of this brochure.